



Protein Hewani untuk
Sehat dan Cerdas

INDO LIVESTOCK 2010 EXPO & FORUM



INDONESIA'S NO.1 LIVESTOCK AND FEED INDUSTRY SHOW

INCORPORATING WITH



THE 5TH INDONESIA'S NO.1 INTERNATIONAL LIVESTOCK AND FEED INDUSTRY SHOW

8 - 10 July 2010
Jakarta Convention Center
Indonesia



LIST OF CONTENTS:

- 1. SHOW FACTS**
- 2. EXHIBITORS SURVEY ANALYSIS**
- 3. TRADE VISITOR ANALYSIS**
- 4. FORUM & TECHNICAL PRESENTATIONS**
- 5. EXHIBITOR'S QUOTE**
- 6. PUBLICITY & PROMOTION**
- 7. ADVERTISING**
- 8. EXHIBITION ACTIVITIES**



INDO 
LIVESTOCK
2010 EXPO & FORUM
INDONESIA'S NO.1 LIVESTOCK AND FEED INDUSTRY SHOW

INCORPORATING WITH

INDOFEED
2010 EXPO & FORUM
INDONESIA'S NO.1 FEED INDUSTRY EVENT

INDO DAIRY
2010 EXPO & FORUM
INDONESIA'S NO.1 DAIRY INDUSTRY EVENT

INDO 
FISHERIES
2010 EXPO & FORUM
INDONESIA'S NO.1 FISHERIES INDUSTRY EVENT

Show
Facts

INDO LIVESTOCK 2010 EXPO & FORUM
THE 5th INDONESIA'S NO. 1 INTERNATIONAL LIVESTOCK AND FEED
INDUSTRY SHOW
"The Future of Livestock Industry is Here and Now at Indo Livestock 2010"
8 – 10 July 2010
Jakarta Convention Center - JCC

This is what the show is all about:

1. INDO LIVESTOCK 2010 EXHIBITION WAS HELD CONCURRENTLY WITH:

➤ INDO LIVESTOCK 2010 Forums :

Seminar MIPI

- Expert from Breeding Company (COBB/ROSS)
Tema: "Unggas Sebagai Hasil Budidaya dan Keunggulan Genetik yang Alami"
- Tema: "Sehat dan Cerdas Berkat Produk Unggas yang Aman dan Bergizi"

Seminar IPB

- Tema: "Menggalang Sinergisme Dalam Pengembangan Usaha Peternakan Skala Menengah: Model, Teknologi, Pendidikan dan Pendanaan".

Seminar Nasional dan Pra Kongres Ke X

Talk show dan Diskusi Sarjana Membangun Desa (ISPI)

- Tema: "Sarjana Peternakan, Pengabdian Untuk Bangsa"
- Tema: "Jaminan Halal Produk Peternakan, Implementasi UU Peternakan dan Kesehatan Hewan No. 18 Tahun 2009"
- Ikatan Sarjana Peternakan Indonesia (ISPI)

➤ INDO LIVESTOCK 2010 – Technical Product Presentations

2. IT WAS HOSTED BY:

Directorate General of Livestock Services, Department of Agriculture

3. IT WAS ENDORSED BY:

- Department of Industry
- Department of Trade
- Indonesian Exhibition Companies Association (ASPERAPI)

4. IT WAS SUPPORTED BY:

- Indonesian Poultry Breeder Association (GPPU)
- Indonesian Veterinary Medical Association (PDHI)
- Indonesian Veterinary Drugs Association (ASOHI)
- Indonesian Feedmills Association (GPMT)
- Indonesian Poultry Entrepreneur Association (GAPPI)
- Association Poultry Producers (GOPAN)
- Federation of Asean Poultry Producers (FAPP)
- Indonesian Poultry Information Centre (PINSAR)
- Indonesian Society of Animal Science (ISPI)
- World's Poultry Science Association Indonesia (MIPI)

5. IT WAS OFFICIAL PUBLICATION BY:

- Poultry Indonesia

6. IT WAS SUPPORTED PUBLICATION & INTERNET BY:

- Agrina
- eFeedlink
- Kompas
- International Aqua Feed
- Infovet
- Asian Poultry
- Sinar Tani
- Inilah.com
- Pikiran Rakyat
- International Poultry Production
- Jawa Pos
- Suara Merdeka
- Trobos
- Grain & Feed Milling Technology

7. OPENING CEREMONY – GUEST OF HONOUR

Dr. Ir. H. Suswono. MMA.

Minister of Agriculture of the Republic of Indonesia

Dr. Ir. Tjeppy D. Soedjana, M.Sc

Director General of Livestock Services, Ministry of Agriculture of the Republic of Indonesia

8. NUMBER OF EXHIBITING COMPANIES:

379 (including principals/ agents from 39 countries)

9. NUMBER OF COUNTRIES/ REGIONS

Total Countries : 39 Countries

- | | | |
|---------------|------------------|------------------------|
| a. Argentina | p. Indonesia | ee. Sweden |
| b. Australia | q. Italy | ff. Switzerland |
| c. Austria | r. Japan | gg. Taiwan |
| d. Bangladesh | s. Jordania | hh. Thailand |
| e. Belgium | t. Malaysia | ii. The Netherlands |
| f. Brazil | u. Mexico | jj. The United Kingdom |
| g. Bulgaria | v. New Zealand | kk. The USA |
| h. Canada | w. Pakistan | ll. Turkey |
| i. China | x. Peru | mm. Vietnam |
| j. Cyprus | y. Philippines | |
| k. Denmark | z. Poland | |
| l. Ecuador | aa. Singapore | |
| m. France | bb. South Africa | |
| n. Germany | cc. South Korea | |
| o. India | dd. Spain | |

10. TOTAL SQUARE METER

- a. 9,360 sqm GROSS
- b. 4,500 sqm NET

LIST OF PARTICIPANTS

| COMPANY | REFER TO | COUNTRY |
|--|--|-----------------|
| 1. Addcon | Novindo Agritech Utama, PT. | Germany |
| 2. Adisseo Asia Pacific Pte Ltd. | Romindo Primavetcom, PT. | Singapore |
| 3. Agrina, Tabloid | | Indonesia |
| 4. Agrologic | Charoen Pokphand Indonesia, PT. | USA |
| 5. Agri Servis Sakti (Delaval Indonesia), PT | Agri Servis Sakti (Delaval Indonesia), PT. | Indonesia |
| 6. Agrinusa Unggul Jaya, PT. | | Indonesia |
| 7. Agro | Paeco Agung, PT. | USA |
| 8. Agrow Inti Makmur | | Indonesia |
| 9. Alke BV | Lito Prima Mandiri | The Netherlands |
| 10. Allflex Australia Pty. Ltd. | Haes Brothers, PT. | Australia |
| 11. Allied Agro / Zucami | | Thailand |
| 12. Alltech Biotechnology Indonesia, PT | | Indonesia |
| 13. Alltech Inc. | Alltech Biotechnology Indonesia, PT. | USA |
| 14. AMB EXPO | | Malaysia |
| 15. Animal Supplements (Thailand) Co. Ltd. | | Vietnam |
| 16. Anyang GEMCO Energy Machinery Co., Ltd. | China Pavilion | China |
| 17. Applied Biosystems | Laborindo Sarana, PT. | Singapore / USA |
| 18. Apte | Stolz Asia Pte Ltd | Japan |
| 19. Asian Agribusiness Publications Pte Ltd | | Singapore |
| 20. Asian Poultry | | Singapore |
| 21. Association Poultry Producers (GOPAN) | | Indonesia |
| 22. Astino Agro-House Multi System | Astino Berhad | Malaysia |
| 23. Astino Berhad | | Malaysia |
| 24. Austral Group S.A.A | RNJ Commodity Trading, PT. | Peru |
| 25. Austral West | Stolz Asia Pte Ltd | Australia |
| 26. Australia Trade Commission | | Indonesia |
| 27. Ayurved Ltd. | | India |
| 28. Balai Besar Pelatihan Kesehatan Hewan Cinagara | | Indonesia |
| 29. Balai Inseminasi Buatan Lembang | | Indonesia |
| 30. Bayle S.A. | | France |
| 31. Behn Meyer Kimia, PT. | | Indonesia |
| 32. Beijing Smile Feed Sci. & Tech Co., Ltd | China Pavilion | China |
| 33. Beijing Sunpu Biochem Tech Co., Ltd | China Pavilion | China |
| 34. Bell Laboratories | Novindo Agritech Utama, PT. | USA |
| 35. Bentoli Agrinutrition Asia Pte Ltd | | Singapore |
| 36. BEP – Biosecurity Engagement Program | | Indonesia |
| 37. Berg+Schmidt | Romindo Primavetcom, PT. | Malaysia |
| 38. Best Poultry Technology | | Italy |
| 39. Big Dutchman Group | Big Dutchman | Germany |
| 40. Big Herdsman Machinery | | China |
| 41. Bintang Terang Gemilang, PT | Japfa Comfeed Indonesia Tbk, PT. | Indonesia |

| | | | |
|-----|--|-----------------------------------|-----------|
| 42. | Biochem GmbH | Gemilang Citra Indo, PT. | Germany |
| 43. | Biomin Singapore Pte Ltd. | Romindo Primavetcom, PT. | Singapore |
| 44. | Biotek | | Indonesia |
| 45. | Blue Sky Biotech, PT. | | Indonesia |
| 46. | Bluewave Marine Ingredients | Linkasia Partners Pte Ltd | Ecuador |
| 47. | Boqor Agricultural University | | Indonesia |
| 48. | Buhler (Changzhou) Machinery Co., Ltd | China Pavilion | China |
| 49. | Cangzhou Tianyu Feed Additive Co., Ltd | China Pavilion | China |
| 50. | Caprifarmindo Labs, PT | | Indonesia |
| 51. | Carfed S.A. | Gemilang Citra Indo, PT. | Italy |
| 52. | Ceetal | Tri Dinamika Nusantara, PT. | France |
| 53. | Ceres Agricultural & Chemical Co | | Singapore |
| 54. | Ceva Animal Health Indonesia, PT | | Indonesia |
| 55. | Ceva Sante Animale | Ceva Animal Health Indonesia, PT. | France |
| 56. | Chak Rader Farm Equipments Pvt. Ltd | Chakra - India | India |
| 57. | Changchun Dacheng Bio-Chem Engineering Development Co., Ltd. | China | China |
| 58. | Charoen Pokphand Indonesia, PT. | | Indonesia |
| 59. | Cheil Bio Co.Ltd. | Blue Sky Biotech, PT. | Korea |
| 60. | Cheil Jedang Feed Jombang, PT. | CJ Feed Indonesia | Indonesia |
| 61. | Cheil Jedang Indonesia Headquarter | CJ Feed Indonesia | Indonesia |
| 62. | Cheil Jedang Superfeed, PT. | CJ Feed Indonesia | Indonesia |
| 63. | Chemtrade | | Indonesia |
| 64. | Chick Master Incubator Company | Gemilang Citra Indo, PT. | USA |
| 65. | Chore-Time | Charoen Pokphand Indonesia, PT. | USA |
| 66. | Chuan Yi Industrial Co., Ltd | | Taiwan |
| 67. | Ciomas Adisatwa, PT. | Japfa Comfeed Indonesia Tbk, PT. | Indonesia |
| 68. | Cipla Ltd. | Paeco Agung, PT | India |
| 69. | Cis Isolator | Paeco Agung, PT | USA |
| 70. | Citrex Inc | Nutrimax Prima Perkasa, PT | USA |
| 71. | CJ Bio | | Indonesia |
| 72. | CJ Feed | | Indonesia |
| 73. | CJ Indonesia, PT. | | Indonesia |
| 74. | CM Industrial Engineering | | Singapore |
| 75. | Colorado Serum Company | Paeco Agung, PT | USA |
| 76. | Copan | Sumber Aneka Karya Abadi, PT | Italy |
| 77. | Corty Zootechnici S.r.l | Gatra Multi Rejeki, PT. | Italy |
| 78. | Criterion - Hardy | Sumber Aneka Karya Abadi, PT | USA |
| 79. | Dairy Livestock Export | Lunar Chemplast, PT | Australia |
| 80. | Daviesway | Lunar Chemplast, PT | Australia |
| 81. | Delta Prima Agrindo, PT | Chemtrade Indonesia, PT | Indonesia |
| 82. | Desnet Stolz | Stolz Asia Pte Ltd | Argentina |
| 83. | Desnet Stolz | Stolz Asia Pte Ltd | Belgium |
| 84. | Desnet Stolz | Stolz Asia Pte Ltd | Brazil |
| 85. | Desnet Stolz | Stolz Asia Pte Ltd | China |

| | | |
|--|-----------------------------------|-----------------|
| 86. Desnet Stolz | Stolz Asia Pte Ltd | India |
| 87. Desnet Stolz | Stolz Asia Pte Ltd | Malaysia |
| 88. Desnet Stolz | Stolz Asia Pte Ltd | Mexico |
| 89. Desnet Stolz | Stolz Asia Pte Ltd | USA |
| 90. Dex Iberica | Tri Dinamika Nusantara, PT | Spain |
| 91. Dinas Peternakan Jawa Barat | | Indonesia |
| 92. Directorate General of Livestock Services/ Department of Agriculture | | Indonesia |
| 93. Divasa Farmavic S.A | Haes Brothers, PT | Spain |
| 94. Dolphins & Doves Pte. Ltd. | | Singapore |
| 95. Dosatron International | | France |
| 96. DPHI | Stolz Asia Pte Ltd | Philippines |
| 97. Draminski | Paeco Agung, PT | Polandia |
| 98. DSM Nutritional Products Asia Pacific Pte Ltd | | Singapore |
| 99. Dwipa Megah Lestari, PT | | Indonesia |
| 100. Easy Bio System Inc. | Blue Sky Biotech, PT. | Korea |
| 101. E-CAT (Egg Chick Automated Technologies) | Gemilang Citra Indo, PT | France |
| 102. ECM – Noveko International Inc. | Minitub Indonesia, PT | France |
| 103. ECTAD INDONESIA | FAO Indonesia | Indonesia |
| 104. eFeedLink Pte., Ltd. | Gemilang Citra Indo, PT. | Singapore |
| 105. Elecrem | Paeco Agung, PT | Italy |
| 106. Elo Karsa Utama, PT. | | Indonesia |
| 107. Emergency Center for Transboundary Animal Diseases | FAO Indonesia | Indonesia |
| 108. Emlab Genetics | Pesona Scientific | USA |
| 109. Energi Baru, PT | | Indonesia |
| 110. Evonik Degussa Peroxide Indonesia, PT | | Indonesia |
| 111. FAO, Food Agricultural Organization | | Indonesia |
| 112. FHK Fujihira | Pesona Scientific | Japan |
| 113. Fine Level | FineTek Pte Ltd | Indonesia |
| 114. FineTek Pte Ltd | | Singapore |
| 115. Flowcrete Asia Sdn. Bhd | Graha Makmur Mitra Sejahtera, PT. | Malaysia |
| 116. Fort Dodge Indonesia (Part of Pfizer Indonesia) | Paeco Agung, PT | Indonesia |
| 117. Frontec Agritama Engineering, CV | | Indonesia |
| 118. Funke-Dr.N.Gerber Labortechnik | Haes Brothers, PT | Germany |
| 119. Galus | | Indonesia |
| 120. Gasolec | Charoen Pokphand Indonesia, PT. | The Netherlands |
| 121. Gatra Multi Rejeki, PT. | | Indonesia |
| 122. Gemilang Citra Indo, PT. | | Indonesia |
| 123. GenoFocus Inc. | Blue Sky Biotech, PT. | Korea |
| 124. Ghazi Brothers | Stolz Asia Pte Ltd | Pakistan |
| 125. Gil Livestock & Veterinary Equipment | Pesona Scientific | |
| 126. Global Indoreksa | Seyang Tech Co Ltd | Indonesia |
| 127. Gold Coin Indonesia, PT | | Indonesia |
| 128. Gold Long Machinery & Engineering Co., Ltd. | | China |
| 129. GPPU | | |

| | | |
|--|---|-----------------|
| 130. Graha Makmur Mitra Sejahtera, PT | | Indonesia |
| 131. Green A Services | | Malaysia |
| 132. GRINM – Beijing General Research Institute For Non-Ferrous Metals | Gemilang Citra Indo, PT. | China |
| 133. Guangdong VTR Bio-Tech Co., Ltd. | China Pavilion | China |
| 134. Guangzhou Huanan Poultry Equipment Co., Ltd. | China Pavilion | China |
| 135. Guangzhou Leader Bio-Technology Co., Ltd. | China Pavilion | China |
| 136. Hach | Sumber Aneka Karya Abadi, PT | USA |
| 137. Haes Brothers, PT | | Indonesia |
| 138. Han Dong Co., Ltd. | | Korea |
| 139. Hangzhou Pepsifine Imp. & Exp. Co., Ltd | China Pavilion | China |
| 140. Hanil | Sumber Aneka Karya Abadi, PT | Korea |
| 141. HatchTech B.V. | | The Netherlands |
| 142. Hauptner Herberholz GmbH & Co. KG | Haes Brothers, PT | Germany |
| 143. Henan Kingman M & E Complete Plant Co., Ltd. | Anyang Gemco Energy Machinery Co., Ltd. | China |
| 144. Henke Sass Wolf | Pesona Scientific | Germany |
| 145. HIMPULI | | Indonesia |
| 146. Hipra Laboratorios SA. | | Indonesia |
| 147. Hongye Agriculture | Paeco Agung, PT | China |
| 148. Hubbard Asia Co. Ltd. | | Thailand |
| 149. Huve Pharma | Charoen Pokphand Indonesia, PT. | Bulgaria |
| 150. Ica Laboratories | Novindo Agritech Utama, PT | South of Africa |
| 151. Iconix Ltd. | Haes Brothers, PT | New Zealand |
| 152. Idah Machinery | | Taiwan |
| 153. IHI Star Machinery | Paeco Agung, PT | Japan |
| 154. Impex Barneveld BV | Lito Prima Mandiri | The Netherlands |
| 155. Impextraco NV. | Charoen Pokphand Indonesia, PT. | Belgium |
| 156. Indianoil Ltd. - IBP Division B.G. Cryogenics | Minitub Indonesia, PT | India |
| 157. Indivasia Sdn Bhd | | Malaysia |
| 158. Indonesia News Center, PT. | Inilah.com | Indonesia |
| 159. Indonesian Feed Milling Association (GPMT) | | Indonesia |
| 160. Indonesian Society of Animal Association (ISPI) | | Indonesia |
| 161. Indonesian Veterinary & Medicine Association (PDHI) | | Indonesia |
| 162. Indonesian Veterinary Drugs Association (ASOHI) | | Indonesia |
| 163. Indovax Pvt. Ltd | Otasindo Prima Satwa, PT | India |
| 164. Infovet Magazine | | Indonesia |
| 165. Inilah.com | | Indonesia |
| 166. iNtRON Biotechnology Inc. | Blue Sky Biotech, PT. | Korea |
| 167. IPB Shigetta | Charoen Pokphand Indonesia, PT. | Indonesia |
| 168. ISA Indonesia | | Indonesia |
| 169. ISHII Livestock Equipment Co., Ltd Shanghai | Lito Prima Mandiri | China |
| 170. ISKY Chemicals Co., Ltd | | China |
| 171. Jamesway Incubators | Charoen Pokphand Indonesia, PT. | Canada |
| 172. Janssen Animal Health (Belgium) | Novindo Agritech Utama, PT | Belgium |
| 173. Janssen Animal Health (Thailand) | Novindo Agritech Utama, PT | Thailand |

| | | |
|---|--------------------------------------|-----------------|
| 174. Jantan Setia Sakti, PT | Schmidt-Seeger GmbH | Indonesia |
| 175. Japfa Comfeed Indonesia Tbk, PT. (Head Office) | | Indonesia |
| 176. Japfa Comfeed Indonesia, PT. (Feed) | | Indonesia |
| 177. Jatinom Equipment | | Indonesia |
| 178. Jefe Nutrition, Inc | Blue Sky Biotech, PT. | Canada |
| 179. Jeno Biotech Inc. | Blue Sky Biotech, PT | Korea |
| 180. Jiangsu Five Continents Machinery Co., Ltd | China Pavilion | China |
| 181. Jiangsu Muyang Group Co. Ltd. | | China |
| 182. Jiangsu Zhengchang Group | | China |
| 183. Joosten Bv | Nutrimax Prima Perkasa, PT | The Netherlands |
| 184. Jorgen Kruuse A/S | Haes Brothers, PT | Denmark |
| 185. Kalbe Farma Animal Health, PT | | Indonesia |
| 186. Kaliber Mitra Sakti, PT | | Indonesia |
| 187. Karcher | Multi Mayaka, PT. | Germany |
| 188. Kawan Lama Sejahtera, PT | | Indonesia |
| 189. KBNP Inc. | Blue Sky Biotech, PT. | Korea |
| 190. Kemin Industries (Asia) Pte Ltd | | Singapore |
| 191. Kemira Chemsolutions | Behn Meyer Kimia, PT. | Singapore |
| 192. Kepro B.V | Otasindo Prima Satwa, PT. | The Netherland |
| 193. Kerbl | Pesona Scientific | Germany |
| 194. Kern | Sumber Aneka Karya Abadi, PT. | Germany |
| 195. KIS, Karya Indonesia Sukses, PT | | Indonesia |
| 196. KNF | Sumber Aneka Karya Abadi, PT. | Germany |
| 197. KPI | Stolz Asia Pte Ltd | Thailand |
| 198. Kuang Huei Industries Ltd | | Taiwan |
| 199. Kutlusan Co. | | Turkey |
| 200. Küül Pads | Charoen Pokphand Indonesia, PT. | USA |
| 201. Lab Companion | Pesona Scientific | Korea |
| 202. Laboratorios Hipra S.A | Mensana Aneka Satwa, PT. | Spain |
| 203. Laborindo Sarana, PT. | | Indonesia |
| 204. Leader Product | Lunar Chemplast, PT. | Australia |
| 205. Lindholst Asia Sdn Bhd | Gemilang Citra Indo, PT. | Malaysia |
| 206. Linkasia Partners Pte Ltd | | Singapore |
| 207. Lito Bina Medikantara | Lito Prima Mandiri | Indonesia |
| 208. Lito Prima Mandiri | | Indonesia |
| 209. Liyang Five Continents Machinery Co., Ltd | | China |
| 210. Liyang Yongli Agro Machinery Co., Ltd | China Pavilion | China |
| 211. Lohmann Animal Health Indonesia, PT. | | Indonesia |
| 212. Lohmann Animal Health International | Lohmann Animal Health Indonesia, PT. | USA |
| 213. Lohmann Animal Health, GmbH & Co.KG | Lohmann Animal Health Indonesia, PT. | Germany |
| 214. Lu & Kevin (Hunan) Tech Co., Ltd | | China |
| 215. Lubing | Charoen Pokphand Indonesia, PT. | Germany |
| 216. Lunar Chemplast | | Indonesia |
| 217. MAI, Masyarakat Akuakultur Indonesia | | Indonesia |

| | | |
|--|----------------------------------|-----------------|
| 218. Marel Stork Poultry Indonesia | | Indonesia |
| 219. Master Corp. | | The USA |
| 220. Master Technology Universal Corp. | | The USA |
| 221. Medion, PT. | | Indonesia |
| 222. Memmert | Sumber Aneka Karya Abadi, PT. | Germany |
| 223. Mensana Aneka Satwa, PT. | | Indonesia |
| 224. MEP Cotton Limited | | India |
| 225. Merial Asia Pte Ltd. | Romindo Primavetcom, PT. | Singapore |
| 226. Min Tech Adsorbents, LLC | Nam Pharma Sdn Bhd | USA |
| 227. Mindray Co., Ltd. | Pesona Scientific | China |
| 228. Ministry of Marine Affairs and Fisheries (DKP) | | Indonesia |
| 229. Minitüb | | Indonesia |
| 230. Minitüb GmbH | Minitube Indonesia, PT. | Germany |
| 231. MIPI | | Indonesia |
| 232. MOBA Asia Sdn Bhd | Gatra Multi Rejeki, PT. | Malaysia |
| 233. Mobedco Vet | Tri Dinamika Nusantara, PT. | Jordan |
| 234. MPN | | Indonesia |
| 235. MPS Red Meat Slaughtering B.V. | | The Netherlands |
| 236. Multi Mayaka, PT | | Indonesia |
| 237. Multibreeder Adirama Indonesia, Tbk, PT. | Japfa Comfeed Indonesia Tbk, PT. | Indonesia |
| 238. Munters | | Italy |
| 239. Munters AB | Gemilang Citra Indo, PT. | Sweden |
| 240. Munters Italy S.p.A | Gatra Multi Rejeki, PT. | Italy |
| 241. Nabertherm | Sumber Aneka Karya Abadi, PT. | Germany |
| 242. Nam Pharma Sdn Bhd | | Malaysia |
| 243. National Renderers Association, Inc (Hong Kong) | | Hong Kong |
| 244. National Renderers Association, Inc (USA) | | USA |
| 245. NB Group Co., Ltd | China Pavilion | China |
| 246. Nilfisk | Kawan Lama Sejahtera, PT | Denmark |
| 247. Novartis (Thailand) Ltd Bangkok | Novindo Agritech Utama, PT. | Thailand |
| 248. Novartis (USA) | Paeco Agung, PT. | USA |
| 249. Novartis Basel (Switzerland) | Novindo Agritech Utama, PT. | Switzerland |
| 250. Novartis Kundle (Austria) | Novindo Agritech Utama, PT. | Austria |
| 251. Novartis Shanghai (China) | Novindo Agritech Utama, PT. | China |
| 252. Novindo Agritech Utama, PT | | Indonesia |
| 253. Nutrex | Tri Dinamika Nusantara, PT. | Belgium |
| 254. Nutrimax Prima Perkasa, PT | | Indonesia |
| 255. O.M.C. SRL | Haes Brothers, PT. | Italy |
| 256. Olmix | Tri Dinamika Nusantara, PT. | France |
| 257. Operon | Pesona Scientific | Korea |
| 258. Optika | Sumber Aneka Karya Abadi, PT. | Italy |
| 259. Otasindo Prima Satwa, PT | | Indonesia |
| 260. OTO Agriculture Marketing & Services Sdn Bhd. | | Malaysia |
| 261. Ottevanger Milling Engineers B.V | Gatra Multi Rejeki, PT. | The Netherlands |

| | | |
|--|----------------------------------|-----------------|
| 262. Packo Inox NV. | Haes Brothers, PT. | Belgia |
| 263. Paeco Agung, PT | | Indonesia |
| 264. Pancosma | Blue Sky Biotech, PT. | Switzerland |
| 265. Pas Reform BV | | The Netherlands |
| 266. Pesona Scientific, PT | | Indonesia |
| 267. Petersime NV | Gatra Multi Rejeki, PT. | Belgium |
| 268. Pfizer Indonesia, PT. | Charoen Pokphand Indonesia, PT. | Indonesia |
| 269. Pharmaceutical & Veterinary Material JSC (HANVET) | | Vietnam |
| 270. PIHI, Perhimpunan Ikan Hias Indonsia | | Indonesia |
| 271. Pila | Stolz Asia Pte Ltd | Indonesia |
| 272. Pinsar Unggas Nasional | | Indonesia |
| 273. Pissouri Farms Ltd (Chio Sheep) | | Cyprus |
| 274. Portacheck Inc | Tri Dinamika Nusantara, PT. | USA |
| 275. Positive Action Publications Ltd | | England |
| 276. Poultry Indonesia | | Indonesia |
| 277. Prima Nutrisi Satwa Indonesia, PT. | Japfa Comfeed Indonesia Tbk, PT. | Indonesia |
| 278. Prince Agri Product Inc | Novindo Agritech Utama, PT. | USA |
| 279. Pristine Dynamics Sdn Bhd | | Malaysia |
| 280. Probiotic International | Novindo Agritech Utama, PT. | UK |
| 281. Probyn | Tri Dinamika Nusantara, PT. | USA |
| 282. PTN | | New Zealand |
| 283. Puslitbangnak Bogor | | Indonesia |
| 284. Qingdao Bridge Trading Co., Ltd | China Pavilion | China |
| 285. Qingdao Xingyi Electronic Equipment Co., Ltd | China Pavilion | China |
| 286. Qyh Biotech Co., Ltd | Lito Prima Mandiri | China |
| 287. Rama Industries | Green A Services (M) Sdn Bhd | India |
| 288. Ria Intl | Stolz Asia Pte Ltd | Bangladesh |
| 289. RNJ Commodity Trading, PT | | Indonesia |
| 290. Romer Labs Diagnostic | Elo Karsa Utama, PT. | Singapore |
| 291. Romindo Primavetcom, PT. | | Indonesia |
| 292. Roxell NV | Gemilang Citra Indo, PT. | Belgium |
| 293. Rutan, PT. | | Indonesia |
| 294. S I U I | Haes Brothers, PT. | China |
| 295. Salmat International GmbH | Gemilang Citra Indo, PT. | Germany |
| 296. Samyang Anipharm Co.Ltd. | Blue Sky Biotech, PT. | Korea |
| 297. Sanbio Laboratories | | Indonesia |
| 298. Sanmak | Paeco Agung, PT. | Turkey |
| 299. Sanovo Engineering A/S | Gemilang Citra Indo, PT. | Denmark |
| 300. Santosa Agrindo, PT | Japfa Comfeed Indonesia Tbk, PT. | Indonesia |
| 301. Schmidt Seeger GMBH | | Germany |
| 302. Selko B.V. | | The Netherlands |
| 303. Senstech | Thinks smart Technology | Malaysia |
| 304. Serap | Lunar Chemplast, PT. | France |
| 305. Seyang Tech Co. Ltd. | | Korea |

| | | |
|--|----------------------------------|-----------------|
| 306. Shanxi Xinliyuan Biotechnology Co., Ltd | China Pavilion | China |
| 307. Shenyang Aerospace Xingguang Cryogenic Vessel Manufacture Co. Ltd | Haes Brothers, PT | China |
| 308. SHS International, PT | | Indonesia |
| 309. Sichuan Chuanheng Chemical Corporation | China Pavilion | China |
| 310. Sierad Produce | | Indonesia |
| 311. Sigma Aldrich | Elo Karsa Utama, PT. | USA |
| 312. SINAR TANI, Tabloid | | Indonesia |
| 313. Sintofarm Spa | Chemtrade Indonesia, PT | Italy |
| 314. SKA S.r.l | Gatra Multi Rejeki, PT. | Italy |
| 315. Skretting | | French |
| 316. SMD | | Indonesia |
| 317. So Good Food, PT | Japfa Comfeed Indonesia Tbk, PT | Indonesia |
| 318. Socorex Isba | Paeco Agung, PT | Swiss |
| 319. Special Nutrient, INC | Nutrimax Prima Perkasa, PT | USA |
| 320. Stolz Asia Pte Ltd | | Singapore |
| 321. Stolz China | Stolz Asia Pte Ltd | China |
| 322. Stolz Miras | Stolz Asia Pte Ltd | Vietnam |
| 323. Stolz S.A | Stolz Asia Pte Ltd | France |
| 324. Stork Food & Dairy Systems | Stork PMT B.V | Thailand |
| 325. Stork Food Systems | Stork PMT B.V | Philippine |
| 326. Stork Indonesia | Stork PMT B.V | Indonesia |
| 327. Stork PMT B.V | | The Netherlands |
| 328. Stork Poultry Processing | | The Netherlands |
| 329. Sun Rise E&T Corporation | | Taiwan |
| 330. Super Unggas Jaya, PT. | CJ Feed Indonesia | Indonesia |
| 331. Supra Sumber Cipta, PT. | Japfa Comfeed Indonesia Tbk, PT. | Indonesia |
| 332. Suri Tani Pemuka, PT. | Japfa Comfeed Indonesia Tbk, PT. | Indonesia |
| 333. Syaqua | | Indonesia |
| 334. Taylor Wharton | Haes Brothers, PT | USA |
| 335. Techno Poultry Equipment S.r.l. | | Italy |
| 336. Telkom | | Indonesia |
| 337. Termotecnica Pericoli S.r.l | Agrinusa Unggul Jaya, PT. | Italy |
| 338. The GSI Asia Group Sdn Bhd | | Malaysia |
| 339. Thermaflo | Lunar Chemplast, PT | New Zealand |
| 340. Thermo Orion | Sumber Aneka Karya Abadi, PT | USA |
| 341. Thinksmart Technology | | Malaysia |
| 342. Thunderbird | Lunar Chemplast, PT | Australia |
| 343. TN Hifeed | | The Netherlands |
| 344. Todda Perkasa, PT | | Indonesia |
| 345. Tri Dinamika Nusantara | | Indonesia |
| 346. Tri-On International Corp. | Blue Sky Biotech, PT. | Korea |
| 347. TROBOS Magazine | | Indonesia |
| 348. Trouw Nutrition Indonesia, PT. | | Indonesia |
| 349. Trouw Nutrition International | | The Netherlands |

| | | |
|--|---------------------------------|-----------------|
| 350. TSIS | | Malaysia |
| 351. Unimed | Paeco Agung, PT | Switzerland |
| 352. United States Department of Agriculture | U S D A | United States |
| 353. V.M.D NV | Chemtrade Indonesia, PT | Belgium |
| 354. Vaksindo Satwa Nusantara, PT | Japfa Comfeed Indonesia Tbk, PT | Indonesia |
| 355. Val-Co | | USA |
| 356. Van Aarsen | | The Netherlands |
| 357. VDL Agrotech B.V | Gemilang Citra Indo, PT. | The Netherlands |
| 358. Velp | Sumber Aneka Karya Abadi, PT | Italy |
| 359. Vemedim Corporation | | Vietnam |
| 360. Vemedim Vietnam | | Vietnam |
| 361. Vencomatic B.V | Gemilang Citra Indo, PT. | The Netherlands |
| 362. Vostermans B.V (Multifan) | | The Netherlands |
| 363. VTR | | China |
| 364. Wecan Global Co., Ltd | | South Korea |
| 365. Weifang Sunwin Chemicals Co., Ltd | China Pavilion | China |
| 366. Wellmark | Novindo Agritech Utama, PT | USA |
| 367. Woogene | Novindo Agritech Utama, PT | Korea |
| 368. WPSA | | Singapore |
| 369. Wuhan Sunhy Biology Co., Ltd | China Pavilion | China |
| 370. Wyne-Tech | Stolz Asia Pte Ltd | Taiwan |
| 371. Y.N. Antoniadis & Sons (Shami Goats) | | Cyprus |
| 372. Yenher Agro Product. Sdn. Bhd. | Nutrimax Prima Perkasa, PT | Malaysia |
| 373. Yixing Tianshi Feed Co., Ltd. | China Pavilion | China |
| 374. Yunnan Copper Sunward Chemicals Co., Ltd. | China Pavilion | China |
| 375. ZCME | ZCME | China |
| 376. Zhengchang | ZCME | Indonesia |
| 377. Zhengchang Bangkok | ZCME | Bangkok |
| 378. Zhengchang International | ZCME | Shanghai |
| 379. Zhengchang Malaysia | ZCME | Malaysia |



INDO
LIVESTOCK
2010 EXPO & FORUM
INDONESIA'S NO.1 LIVESTOCK AND FEED INDUSTRY SHOW

INCORPORATING WITH

INDOFEED
2010 EXPO & FORUM
INDONESIA'S NO.1 FEED INDUSTRY EVENT

INDO DAIRY
2010 EXPO & FORUM
INDONESIA'S NO.1 DAIRY INDUSTRY EVENT

INDO
FISHERIES
2010 EXPO & FORUM
INDONESIA'S NO.1 FISHERIES INDUSTRY EVENT

Exhibitors Survey Analysis



RESULTS OF EXHIBITORS' SURVEY

EXHIBITORS' EXPECTATION

90.91% of exhibitors achieved or exceeded their expectation on participation

| Exceeded | Achieved | Not Achieved | No Comments | Total |
|----------|----------|--------------|-------------|-------|
| 14.69% | 76.22% | 9.09% | 0.00% | 100% |

QUALITY OF VISITORS

82.44% rated the quality of visitors as satisfied or partially

| Satisfied | Partially | Not Satisfied | No Comments | Total |
|-----------|-----------|---------------|-------------|-------|
| 39.17% | 43.27% | 6.29% | 11.27 | 100% |

OVERALL SERVICE OF NAPINDO

85.47% rated the overall service of organizer as very good or good

| Very Good | Good | Poor | No Comments | Total |
|-----------|--------|-------|-------------|-------|
| 16.78% | 68.69% | 5.44% | 9.09% | 100% |

OVERALL SERVICE OF CONTRACTOR

41.26% rated the overall service of contractor as very good or good

| Very Good | Good | Poor | No Comments | Total |
|-----------|--------|-------|-------------|-------|
| 11.89% | 29.37% | 3.50% | 55.24% | 100% |

EXHIBITORS RATING OF SHOW

82.07% rated the show as very successful or successful

| Very Successful | Successful | Not Successful | No Comments | Total |
|-----------------|------------|----------------|-------------|-------|
| 6.99% | 75.08% | 16.78% | 30.77% | 100% |

EXHIBITORS PARTICIPATED IN INDO LIVESTOCK 2010

75.52% of exhibitors interested to participate in INDO LIVESTOCK 2010

| Interest | Contact | No Comments | Total |
|----------|---------|-------------|-------|
| 46.15% | 29.37% | 24.48% | 100% |

GENERAL

| Objectives | Yes | Partially | No | No Comments | TOTAL |
|-----------------------------------|--------|-----------|-------|-------------|--------|
| Generates sales enquiries | 16.78% | 18.88% | 0.00% | 64.34% | 100% |
| Meet existing business contacts | 27.27% | 6.99% | 1.40% | 64.34% | 100% |
| Make new business contacts | 27.97% | 15.38% | 1.40% | 55.25% | 100% |
| Launch new products/services | 17.48% | 13.29% | 3.50% | 65.73% | 100% |
| Gather general market information | 20.98% | 16.08% | 3.50% | 59.44% | 100% |
| Secure at-show orders | 18.88% | 12.59% | 2.80% | 65.73% | 102.8% |
| Promote corporate image | 11.89% | 16.78% | 1.40% | 69.93% | 100% |
| Recruit agents/distributors | 13.99% | 16.78% | 4.90% | 64.33% | 100% |
| Test market / do market research | 20.28% | 12.59% | 1.40% | 65.73% | 100% |
| Maintain market presence | 10.49% | 9.79% | 1.40% | 78.32% | 100% |
| Others, please specify | 5.59% | 3.50% | 2.10% | 88.81% | 100% |

BUSINESS ACTIVITIES

| Objectives | Good | Average | Poor | No Comments | TOTAL |
|-------------------------|--------|---------|-------|-------------|-------|
| Enquiries | 20.98% | 30.77% | 3.50% | 44.75% | 100% |
| Order Taken | 13.99% | 24.48% | 5.59% | 55.94% | 100% |
| Values of Order Taken | 16.78% | 25.18% | 5.59% | 52.45% | 100% |
| Orders anticipated | 13.99% | 20.98% | 6.29% | 58.74% | 100% |
| Values of Future Orders | 26.57% | 30.07% | 3.50% | 39.86% | 100% |

THE GROUP OF VISITORS

| Objectives | Very Satisfied | Satisfied | No Satisfied | No Comments | TOTAL |
|-------------------------------|----------------|-----------|--------------|-------------|-------|
| Agriculture | 3.50% | 21.68% | 5.59% | 69.23% | 100% |
| Breed / Hatchery | 10.49% | 34.27% | 2.80% | 52.44% | 100% |
| Cattle Farm | 3.50% | 17.48% | 2.80% | 76.22% | 100% |
| Consultancy | 3.50% | 10.49% | 2.80% | 83.21% | 100% |
| Feed / Feed Milling | 10.49% | 38.46% | 3.50% | 47.55% | 100% |
| Food Processor / Manufacturer | 11.89% | 30.07% | 2.10% | 55.94% | 100% |
| Food Retailer / Distributor | 5.59% | 13.29% | 2.10% | 79.02% | 100% |
| Government | 6.29% | 20.28% | 1.40% | 72.03% | 100% |
| Hotel / Restaurant / Catering | 8.39% | 19.58% | 1.40% | 70.63% | 100% |

| | | | | | |
|-----------------------|--------|--------|-------|--------|------|
| Layer Farm | 10.49% | 23.08% | 4.20% | 62.23% | 100% |
| Importer /Distributor | 13.29% | 20.97% | 3.50% | 62.24% | 100% |
| Pig Farm | 2.10% | 10.49% | 6.29% | 81.12% | 100% |
| Poultry Farm | 13.99% | 32.87% | 2.80% | 50.34% | 100% |

Note: The above results was based on valid questionnaires RETURNED



INDO
LIVESTOCK
2010 EXPO & FORUM
INDONESIA'S NO.1 LIVESTOCK AND FEED INDUSTRY SHOW



INCORPORATING WITH

INDOFEED
2010 EXPO & FORUM
INDONESIA'S NO.1 FEED INDUSTRY EVENT

INDO DAIRY
2010 EXPO & FORUM
INDONESIA'S NO.1 DAIRY INDUSTRY EVENT

INDO
FISHERIES
2010 EXPO & FORUM
INDONESIA'S NO.1 FISHERIES INDUSTRY EVENT



*Trade
Visitors
Analysis*



TOTAL OVERALL VISITORS

| | |
|-------------------|-------|
| Regular Visitors: | |
| • Local | 9,192 |
| • Overseas | 115 |
| VIP Visitor: | |
| • Local | 1,380 |
| • Overseas | 30 |

TOTAL SEMINARS ATTENDANCE

| | |
|--------------------------|-------|
| • IPB Seminar | 115 |
| • MIPI Seminar | 135 |
| • ISPI Seminar | 203 |
| • Technical Presentation | 2,807 |

ON-SITE VISITORS BY COUNTRY BREAKDOWN

| NO | COUNTRY | COUNT | PERCENTAGE |
|-----|-----------------|-------|------------|
| 1. | Australia | 3 | 0.03% |
| 2. | Belgium | 4 | 0.04% |
| 3. | Taiwan | 6 | 0.06% |
| 4. | UK | 1 | 0.01% |
| 5. | China | 8 | 0.07% |
| 6. | Bangladesh | 6 | 0.06% |
| 7. | Vietnam | 3 | 0.03% |
| 8. | Germany | 4 | 0.04% |
| 9. | India | 4 | 0.04% |
| 10. | Indonesia | 10572 | 98.65% |
| 11. | Italy | 2 | 0.02% |
| 12. | Malaysia | 36 | 0.34% |
| 13. | Phillipines | 3 | 0.03% |
| 14. | Japan | 5 | 0.05% |
| 15. | Saudi Arabia | 2 | 0.02% |
| 16. | Singapore | 26 | 0.24% |
| 17. | Spain | 2 | 0.02% |
| 18. | Thailand | 9 | 0.08% |
| 19. | The Netherlands | 4 | 0.04% |
| 20. | U S A | 6 | 0.06% |

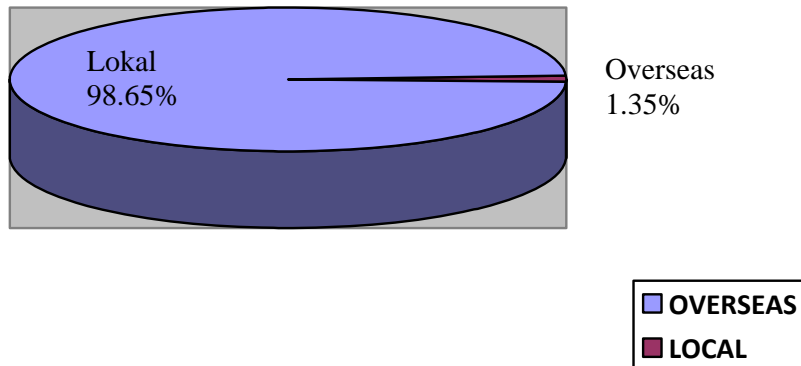
| | | | |
|-----|-------------|---|-------|
| 21. | Switzerland | 1 | 0.01% |
| 22. | U.A.E | 1 | 0.01% |
| 23. | Pakistan | 2 | 0.02% |
| 24. | Austria | 1 | 0.01% |
| 25. | Algeria | 2 | 0.02% |
| 26. | Srilanka | 1 | 0.01% |
| 27. | Iran | 2 | 0.02% |

| | | | |
|--------------|--|--------|------|
| TOTAL | | 10,717 | 100% |
|--------------|--|--------|------|

VISITOR STATISTIC

ON-SITE REGISTERED VISITORS

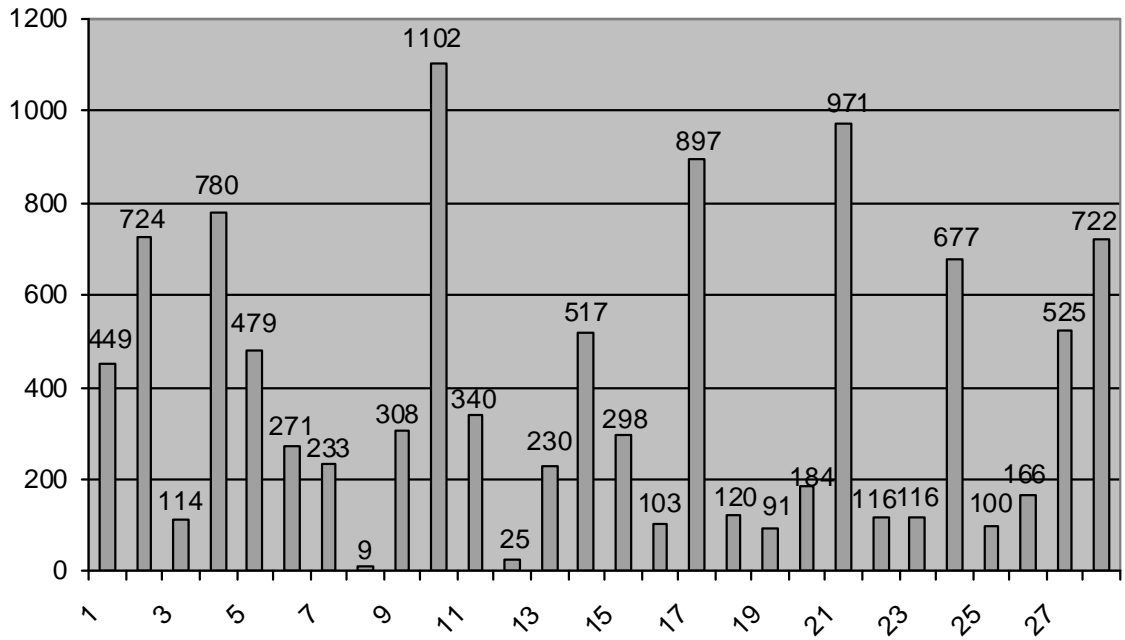
| Visitors | Count | Percentage |
|-------------------------|---------------|-------------|
| Local Visitors + VIP | 10,572 | 98.65% |
| Overseas Visitors + VIP | 145 | 1.35% |
| TOTAL | 10,717 | 100% |



VISITOR'S COMPANY MAIN BUSINESS

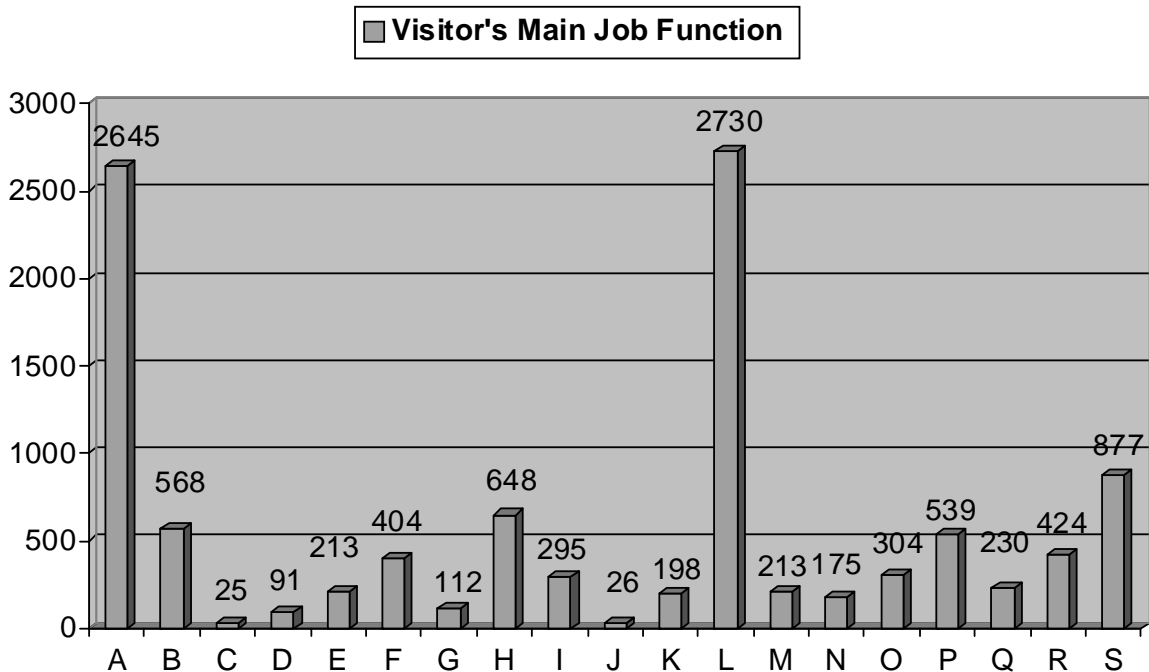
| | VISITORS | Count | Percentage |
|----|----------------------------|---------------|-------------------|
| 1 | Agriculture | 499 | 4.66% |
| 2 | Animal Health | 724 | 6.76% |
| 3 | Bank / Insurance | 114 | 1.06% |
| 4 | Breed Farm | 780 | 7.28% |
| 5 | Cattle Farm | 479 | 4.47% |
| 6 | Consultant | 271 | 2.53% |
| 7 | Dairy Farm | 233 | 2.17% |
| 8 | Embassy / Consulate | 9 | 0.08% |
| 9 | Export/ Import | 308 | 2.87% |
| 10 | Feed/ Feed milling | 1102 | 10.28% |
| 11 | Fish Farmer | 340 | 3.17% |
| 12 | Fisherman | 25 | 0.23% |
| 13 | Food Processor | 230 | 2.15% |
| 14 | Government | 517 | 4.82% |
| 15 | Hatchery | 298 | 2.78% |
| 16 | Hotel/ Restaurant/ Caterer | 103 | 0.96% |
| 17 | Layer Farm | 897 | 8.37% |
| 18 | Milk Processing | 120 | 1.12% |
| 19 | Packaging | 91 | 0.85% |
| 20 | Pig Farm | 184 | 1.72% |
| 21 | Poultry Farm | 971 | 9.06% |
| 22 | Research Institution | 116 | 1.08% |
| 23 | Slaughter House | 116 | 1.08% |
| 24 | Supplier/ Retailer | 677 | 6.32% |
| 25 | Trade Association | 100 | 0.93% |
| 26 | Trading/ Shop | 166 | 1.55% |
| 27 | University/ Education | 525 | 4.9% |
| 28 | Others | 722 | 6.74% |
| | TOTAL | 10,717 | 100% |

Visitor's Company Main Business



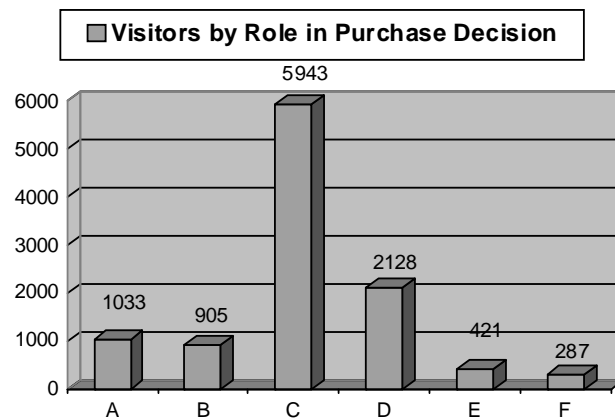
VISITOR'S MAIN JOB FUNCTION

| | VISITORS | Count | Percentage |
|---|----------------------------------|---------------|-------------------|
| A | Director / Owner | 2645 | 24.68% |
| B | General Manager | 568 | 5.30% |
| C | F & B Manager | 25 | 0.23% |
| D | Finance Manager | 91 | 0.85% |
| E | Operation Manager | 213 | 1.99% |
| F | Production Manager | 404 | 3.77% |
| G | Purchasing / Procurement Manager | 112 | 1.05% |
| H | Sales / Marketing Manager | 648 | 6.05% |
| I | Technical Manager | 295 | 2.75% |
| J | Chef | 26 | 0.24% |
| K | Consultant | 198 | 1.85% |
| L | Staff | 2730 | 25.47% |
| M | Manager Operational | 213 | 1.99% |
| N | Research & Development | 175 | 1.63% |
| O | Supervisor | 304 | 2.84% |
| P | Veterinary | 539 | 5.03% |
| Q | Lecturer / Trainer | 230 | 2.15% |
| R | Student | 424 | 3.96% |
| S | Others | 877 | 8.18% |
| | TOTAL | 10,717 | 100% |



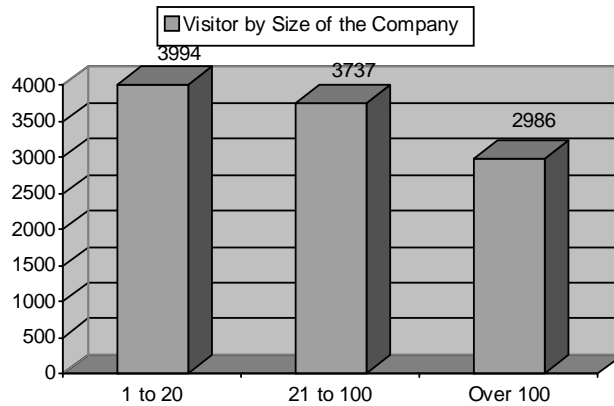
VISITORS BY ROLE IN PURCHASE DECISION

| | Visitors | Count | Percentage |
|---|------------------------------------|---------------|-------------------|
| A | Purchase | 1033 | 9.64% |
| B | Recommend | 905 | 8.44% |
| C | Gather Information | 5943 | 55.45% |
| D | Source Strategic Relationship | 2128 | 19.86% |
| E | Evaluate for Further Participation | 421 | 3.93% |
| F | Others | 287 | 2.68% |
| | TOTAL | 10,717 | 100% |



VISITOR'S BY SIZE OF THE COMPANY

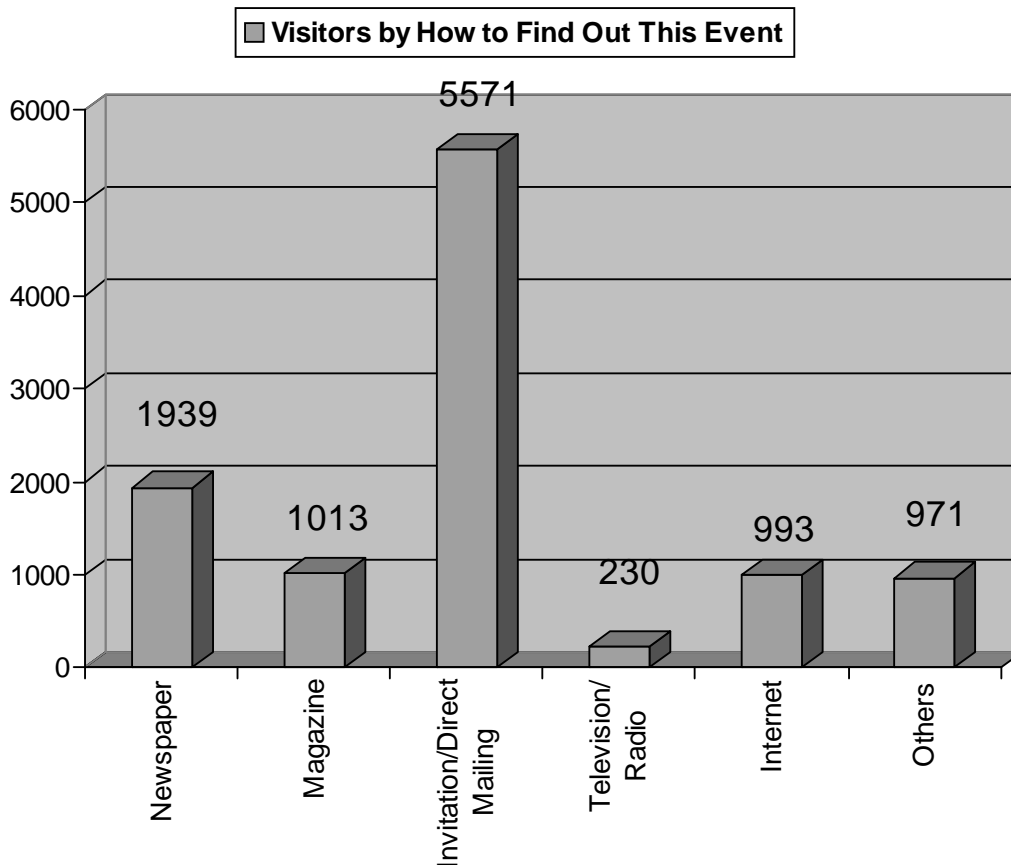
| | Size of Company | Count | Percentage |
|---|------------------------|---------------|-------------------|
| A | 1 – 20 | 3994 | 37.27% |
| B | 21 – 100 | 3737 | 34.87% |
| C | Over 100 | 2986 | 27.86% |
| | TOTAL | 10,717 | 100% |



VISITOR'S BY HOW TO FIND OUT THIS EVENT

| | How to Find Out this Event | Count | Percentage |
|---|----------------------------|---------------|-------------|
| A | Newspaper | 1939 | 18.09% |
| B | Magazine | 1013 | 9.45% |
| C | Invitation/Direct Mailing | 5571 | 51.98% |
| D | Television / Radio | 230 | 2.15% |
| E | Internet | 993 | 9.27% |
| E | Others | 971 | 9.06% |
| | TOTAL | 10,717 | 100% |

Percentage adds up more than 100% as this is a multiple choice question. The percentage is based on the total visitor count 10.717 only.





INDOFEED
2010 EXPO & FORUM
INDONESIA'S NO.1 FEED INDUSTRY EVENT

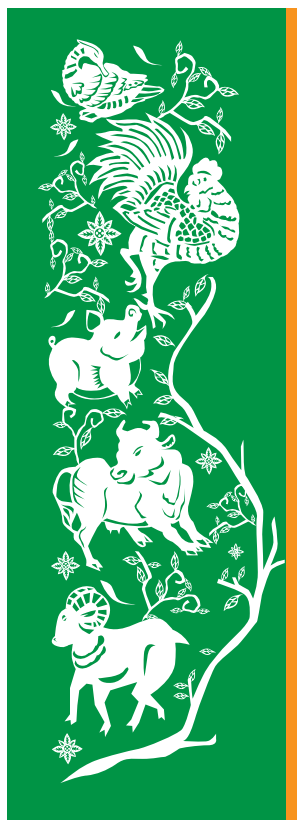
INDO DAIRY
2010 EXPO & FORUM
INDONESIA'S NO.1 DAIRY INDUSTRY EVENT

INDO FISHERIES
2010 EXPO & FORUM
INDONESIA'S NO.1 FISHERIES INDUSTRY EVENT

*Forum and
Technical
Presentation*



FORUMS



Seminar IPB:

Menggalang Sinergisme Dalam Pengembangan Usaha Peternakan Skala Menengah: Model, Teknologi, Pendidikan dan Pendanaan

Kamis, 8 Juli 2010 | Jakarta Convention Center | Cendrawasih II Room

| | | |
|---------------|---|---|
| 13.00 - 13.30 | Registrasi | |
| 13.30 - 14.00 | Pembukaan MC Rektor Institut Pertanian Bogor | |
| 14.00 - 15.30 | Keynote speech 1. Dr. Syarif Hasan, Menteri Negara Koperasi dan Usaha Kecil dan Menengah RI 2. Prof. Dr. Fasli Jalal, Wakil Menteri Pendidikan RI 3. Dr. Bayu Krisna Mukti, Wakil Menteri Pertanian RI 4. Dr. M. Jafar Hafsa, Ketua Komisi IV DPR RI | Dukungan UMKM untuk Menumbuhkan Wirausaha Muda Peternakan Pembentukan Karakter Bangsa melalui Pendidikan Berbasis Kewirausahaan di Perguruan Tinggi Swasembada Sapi Potong: Debottle-Necking Problem of Red Meat Self- Sufficient Dukungan Politik terhadap Pengembangan Industri Peternakan |
| 15.30 - 15.45 | Break | |
| 15.45 - 17.00 | Pleno I 5. Dr. Ir. Muhammad Said Didu, Sekjen Kementerian BUMN 6. Ir. Achmad Dawami, Direktur PT. Primatama Karyapersada (Japfa Group) 7. Dr. Hardinsyah, Ketua Asosiasi CSR Indonesia | Program BUMN Mendukung Ketahanan Pangan Model Kemitraan Industri Besar dengan Peternakan Rakyat Peluang penggunaan dana CSR untuk pengembangan peternakan |
| 17.00 - 17.15 | Motivator | |



Pra Kongres Ke X

IKATAN SARJANA PETERNAKAN INDONESIA : Jaminan Halal Produk Peternakan, Implementasi UU Peternakan dan Kesehatan Hewan NO 18 Tahun 2009

Jum'at 9 Juli 2010 | Jakarta Convention Center | Cendrawasih II Room

17.000 - 18.30

NARASUMBER:

1. Kebijakan Pemerintah dalam Jaminan Halal Produk Peternakan (Direktur Kesmavet)
2. Analisis , Regulasi & kasus kehalalan produk peternakan dan hasil-hasilnya (BPOM),
3. Tantangan dan problematika sistem jaminan kehalalan pangan di Indonesia (LPPOM-MUI)
4. Good Halal Practices untuk menjamin kehalalan produk peternakan dan hasil-hasilnya (Prof Trijoko Wisnumurti, UGM)
5. Pengalaman Penerapan system jaminan halal di industri (Industri Peternakan)
6. Pemantauan system jaminan halal masyarakat (YLKI)



Seminar ISPI

TALK SHOW DAN DISKUSI SARJANA MEMBANGUN DESA : Sarjana Peternakan, Pengabdian Untuk Bangsa

Jum'at 9 Juli 2010 | Jakarta Convention Center | Cendrawasih II Room

08.30 – 12.00 WIB

Keynote Speaker: Menteri Pertanian

Narasumber:

1. Dirjend Peternakan Dan Kesehatan Hewan
2. Drh. Prabowo Respatio. C.R. Phd
3. Asosiasi Sarjana Membangun Desa
4. Ir. Yudi Guntara Noor (Ketua Umum Pb Ispi)
5. Perhimpunan Pimpinan Dinas Peternakan Indonesia

TECHNICAL PRODUCT PRESENTATIONS

| THURSDAY, JULY 8, 2010 | | | | | |
|------------------------|---------------|--|---|---|---|
| Venue | Time | Topic | Speaker | Company | Contact Person |
| THEATER 1 | 13:00 – 13:45 | Raw Material Evaluation – How To Determine The Real Value of Feed Raw Materials? | Ms. Sheila Ramos | EVONIK DEGUSSA PEROXIDE INDONESIA, PT | Mr. Adi Sucipto T. +62 21 520 0393 F. +62 21 520 0392 |
| | 14:00 – 14:45 | Full Control of IBD with Cevac Transmune Hatchery Vaccination Assured by CHICK Program | Dr. Marcelo Paniago | CEVA ANIMAL HEALTH INDONESIA, PT | Ms. Amanda Ariani T. +62 21 765 3408 F. +62 21 751 2056 |
| | 15:00 – 15:45 | Between Profit and Loss? How to Optimize Your Mycotoxins Control in Poultry Feeds? | Mr. Alain Reocreux – OLMIX International Business Development Manager | TRI DINAMIKA NUSANTARA, PT | Mr. David Hoo T.+62 21 4584 4641 F.+62 21 4584 4641 |
| | 16:00 – 16:45 | Consistent Valve Creation With Phytase – Beyond 500 | Mr. Chee Senghuan, Ph. D | BEHN MEYER KIMIA, PT | Mr. Ili Kusmidi T. +62 813 1437 0260 +62 21 756 5000 F. +62 21 756 0860 / 0870 |
| | 17:00 – 17:45 | Feed Quality Improvement & Control | Mr. Shao | SHANGHAI ZHENGCHANG INTERNATIONAL MACHINERY & ENGINEERING Co., Ltd (ZCME) | Ms. Eva / Angelina T. +86 21 641 85 529 F. +86 21 641 63 299 |
| THEATER 2 | 13:00 – 13:45 | Isolation and Identification Technique of Avian Influenza Virus | Prof. Dr. Drh. Fedik A. Rantam | CAPRIFARMINDO LABS., PT | Mr. Suhardi, DVM T. 62 22 420 7725 F. +62 22 423 8476/ 420 7725 ext. 112 |
| | 14:00 – 14:45 | Drug Interaction is The Key to Success in Disease Therapy | Drh. Abadi Sutisna, M.Si | CAPRIFARMINDO LABS., PT | Mr. Suhardi, DVM T. +62 22 420 7725 F. +62 22 423 8476/ 420 7725 ext. 112 |
| | 15:00 – 15:45 | Mycotoxin Analysis in Livestock, Fisheries & Dairy Industries | Mrs. Tan Li Mien (ROMER) | ELO KARSA UTAMA, PT | Mr. Riandy Santoso T. +62 21 739 2565 F. +62 21 726 0177 |
| | 16:00 – 16:45 | “Peran Media Mikrobiologi Dalam Pengujian Mikroba Pada SDT Berdasarkan SNI 2897 : 2008 | Ms. Hotnida Junita Situmeang | SUMBER ANEKA KARYA ABADI, PT | Mr. Sen Wie Hiu/ Ms. Yusma T. +62 21 385 4444 F. +62 21 344 2617 |
| | 17:00 – 17:45 | Mould Control by Activated Propionates | Ir. M.E. Maarten van der Heijden | TROUW NUTRITION INTERNATIONAL, PT | Mr. Harris Priyadi T. +62 21 8998 3325 F. +62 21 8998 3326 |
| THEATER 3 | 13:00 – 13:45 | Kenapa Vaksinasi Masih Gagal? | Drh. Witarso | MEDION, PT | Mr. Lexan T. +62 22 603 0612 F. +62 22 601 0859 |
| | 14:00 – 14:45 | AI Masih Mengancam Kita | Prof. Dr. Drh. Ngurah Mahardika & Melina Jonas, M.Sc | MEDION, PT | Mr. Lexan T. +62 22 603 0612 F. +62 22 601 0859 |
| | 16:00 – 16:45 | Infectious Bovine Rhinotracheitis in Indonesia | Mr. I Wayan Teguh Wibawan, DVM, Ph.D, MS | PAECO AGUNG, PT | Mr. Idham Karim, SE/ Drh. Puji Hartini T. +62 21 797 5651 F. +62 21 798 2678 |
| | 17:00 – 17:45 | Biosurfactants Can Improve Feed Utilization and Reduce Feed Costs | DR. K. V. Chandrasekar | KEMIN INDUSTRIES (ASIA PTE LTD) | Mr. Habe Ahmad T. +65 6490 4027 F. +65 6754 1686 |
| THEATER 4 | 13:00 – 13:45 | Coryza Vaccine Three Strain with Advance Formulation WOW | Dr. John Walters BAgSc(Hons) BVSc MBA | PAECO AGUNG, PT | Mr. Idham Karim, SE/ Drh. Puji Hartini T. +62 21 797 5651 F. +62 21 798 2678 |
| | 14:00 – 14:45 | The Challenge Avian Pneumovirus | Dr. Miguel Chale | LABORATORIOS HIPRA S.A. | Ms. Wati T. +62 21 566 3666 F. +62 21 566 3720 |
| | 15:00 – 15:45 | Genophos – A New Generation Phytase | Mr. DH. Lee, DVM | BLUE SKY BIOTECH, PT / PANCOSMA | Ms. Maria Magdalena T. +62 21 756 5164 F. +6221 756 5165 |
| | 16:00 – 16:45 | Efisiensi Produksi Budidaya Ayam Komersil Kita | Drh. Arief Hidayat | MENSANA ANEKA SATWA, PT | Ms. Wati T. +62 21 566 3666 F. +62 21 566 3720 |
| | 17:00 – 17:45 | Efikasi Program Vaksinasi ND dan Gumboro | Drh. Arini Nurhandayani, MM | SANBIO LABORATORIES, PT | Ms. Ayu T.+62 856 971 54 058 +62 21 5437 4898/ 566 3666 F. +62 21 619 7640/ 566 3720 |
| THEATER 5 | 13:00 – 13:45 | Why Do Vaccinations in Poultry Fail at Times? | Dr. R. Sadhu Dr. S.C.Gupta | INDOVAX PVT. LTD. INDIA / OTASINDO PRIMA SATWA, PT | Mr. Kaharuddin Said, DVM T. +62 818 72 71 73 +62 21 8591 8477 / 78 |
| | 14:00 – 14:45 | General Presentation of Forming Technology (nugget, burger) etc. | Mr. Mark Rijpma | STORK FOOD SYSTEMS INDONESIA | Mr. Rudy Hudin T. +62 21 569 74008 F. +62 21 569 59071 |
| THEATER 6 | 13:00 – 13:45 | Update On HPAI Surveillance and Control in Indonesia | To Be Advised | FAO | Ms. Denni T. +62 815 1902 0561 +62 812 9086 254 |
| | 16:00 – 16:45 | Biotector, Pioneering Bacteriophage | DR. J.D. KIM | CJ INDONESIA, PT | Mr. Luthfy Ali Andrian |

| | | | | | |
|-----------|---------------|---|---|-------------------------------------|---|
| | | Technology Against Salmonella | | | T. +62 254 400 660 F. +62 254 400 442/659 |
| THEATER 7 | 13:00 – 13:45 | The Ultrasound Scanners That Make You A Specialist | Mr. Emmanuel Chateau | MINITUB | Mr. Zulkifli Harahap T. +62 21 775 9879 F. +62 21 777 7421 |
| | 14:00 – 14:45 | Minimising Digestive Variation of Raw Materials and Improving Performance of Breeder with Enzymes | Ms. Marylan Dela Mar-Rivera | ROMINDO PRIMAVETCOM, PT ADISSEO | Mr. Lukas A. Sudibyo / Ms. Nani T. +62 21 8300 300 ext. 305 F. +62 21 828 0678 |
| | 15:00 – 15:45 | IBD Problem How to Solve It | Dr. Michael Lee Prof. Charles Rangga Tabbu | ROMINDO PRIMAVETCOM, PT MERIAL | Mr. Lukas A. Sudibyo / Ms. Nani T. +62 21 8300 300 ext. 305 F. +62 21 828 0678 |
| | 16:00 – 16:45 | Harnessing Goodness of Nature for Optimum Profits in Poultry Production | Dr. Praful Kumar | AYURVET LIMITED | Mr. Rohit Kainth T. +91 11 224 55992 -4 F. +91 11 224 55991 |
| | 17:00 – 17:45 | Field Experience on VVND Control in Laying Hens | Mr. Tony Unandar, M.Si | LOHMANN ANIMAL HEALTH INDONESIA, PT | Mr. Kardiman T. +62 21 6470 1203 F. +62 21 6470 1204 |
| THEATER 8 | 13:00 – 13:45 | Genetic Technologies to Target Efficient Production of Quality Shrimp | Mr. Glen Illing | SYAQUA | Ms. Wiwien Winarsih T. +62 21 3002 9372 F. +62 21 |
| | 14:00 – 14:45 | New Insight Into Mode of Action and Efficiency of Plant Extracts for Animal Performance | Ms. Patcharin Maneeroj | BLUE SKY, PT / GENOFOCUS | Ms. Maria Magdalena T. +62 21 756 5164 F. +6221 756 5165 |
| | 15:00 – 15:45 | Economics and Molds and Mycotoxin Contamination of Raw Materials | Mr. Robert A. Swick | NOVINDO AGRITECH HUTAMA, PT | Ms. Forlin Tinora, DVM T. +62 21 724 5986 F. +62 21 722 0373 |
| | 16:00 – 16:45 | Flavomycin – Unique Performance in All Species and Food Safety Benefits | Anguel Grigorov (HUVÉ) | IMA | Ms. Bitra YK M. +62 815 749 58933 |
| | 17:00 – 17:45 | Gil Livestock & Veterinary Equipment | To Be Advised | PESONA SCIENTIFIC, PT | Mr. Yos/ Mr. Fahrurroji T. +62 816 624 633 (Mr. Yos) +62 22 543 0583 F. +62 22 543 0314 |

FRIDAY, JULY 9, 2010

| Venue | Time | Topic | Speaker | Company | Contact Person |
|-----------|---------------|--|---|---|--|
| THEATER 1 | 10:00 – 10:45 | Infectious Bronchitis (IB) | Mr. Teguh Y. Prajitno | VAKSINDO SATWA NUSANTARA, PT / JAPFA COMFEED TBK | Ms. Chinta / Ms. Maureen T. +62 21 831 0308 Ext. 2315 F. +62 21 831 0309 |
| | 11:00 – 11:45 | Immunosuppressive Diseases : Causes, Consequences and Prevention | Dr. Marcelo Paniago | CEVA ANIMAL HEALTH INDONESIA, PT | Ms. Amanda Ariani T. +62 21 765 3408 F. +62 21 751 2056 |
| | 13:30 – 14:15 | Medication to Sanitation by The Drinking Water | Mr. Thierry Claireau | DOSATRON INTERNATIONAL | Mr. Thierry Claireau T. +33 (0) 557 9711 F. +33 (0) 557 9710 85 |
| | 14:30 – 15:15 | Important Role of Vaccine R & D in Determining Quality of Vaccine | Drh. Suhardi, DVM | CAPRIFARMINDO LABS., PT | Mr. Suhardi, DVM T. +62 22 420 7725 F. +62 22 423 8476/ 420 7725 ext. 112 |
| | 15:30 – 16:15 | Mycotoxin Binding in Animal and Human | Mr. David de Haan | TROUW NUTRITION INTERNATIONAL, PT | Mr. Harris Priyadi T. +62 21 8998 3325 F. +62 21 8998 3326 |
| | 16:30 – 17:15 | Peternak Kompak, Telur Stabil (Invitation Only) | Mr. Yoseph Setiabudi | PINSAR UNGGAS NASIONAL | Mr. Riki M. +62 816 832 856 T. +62 21 33 777 6900 |
| | 17:30 – 18:15 | Peternak Kompak, Telur Stabil (Invitation Only) | Mr. Yoseph Setiabudi | PINSAR UNGGAS NASIONAL | Mr. Riki M. +62 816 832 856 T. +62 21 33 777 6900 |
| THEATER 2 | 13:00 – 13:45 | Deteksi dan Monitoring Kualitas Air Pada Sistem Akuakultur | Ms. Okto Risisitih Gustom | SUMBER ANEKA KARYA ABADI, PT | Mr. Sen Wie Hiu T. +62 21 385 4444 F. +62 21 344 2617 |
| | 14:00 – 14:45 | Poultry Processing and Evisceration Technology | Mr. Joost van Elzakker | STORK FOOD SYSTEMS INDONESIA | Mr. Rudy Hudin T. +62 21 569 74008 F. +62 21 569 59071 |
| | 15:00 – 15:45 | Nutraxe Xyla : A Unique Bacterial NSP Enzyme to Upgrade Corn – Soya Based Diets | Ir. Kurt Van de Mierop – Sales Manager, NUTREX | TRI DINAMIKA NUSANTARA, PT | Mr. David Hoo T. +62 21 4584 4641 F. +62 21 4584 4641 |
| | 16:00 – 16:45 | “How to Increase Milk Production Per Cow Through Management and Nutrition” | Mr. Alain Reocreux – OLMIX International Business Development Manager | TRI DINAMIKA NUSANTARA, PT | Mr. David Hoo T. +62 21 4584 4641 F. +62 21 4584 4641 |
| THEATER 3 | 10:00 – 10:45 | Lohmann Brown Commercial & Most Economical Management Under Hot Weather Conditions | Mr. Young San Kim | MULTIBREEDER ADIRAMA INDONESIA TBK, PT / LOHMANN | Ms. Chinta / Ms. Windy T. +62 21 831 0308 Ext 2315 F. +62 21 831 0309 |
| | 11:00 – 11:45 | Lohmann Brown Breeding Program | Mr. Ray Hall | MULTIBREEDER ADIRAMA INDONESIA TBK, PT / LOHMANN | Ms. Chinta / Ms. Windy T. +62 21 831 0308 Ext 2315 F. +62 21 831 0309 |
| | 13:00 – 13:45 | Sudah Tepatkah Desinfektan yang Anda Gunakan? | Riana Yuliana, S.Si., Apt | MEDION, PT | Mr. Lexan T. +62 22 603 0612 F. +62 22 601 0859 |
| | 14:00 – 14:45 | Pentingnya Mengevaluasi Kualitas Air | Ms. Elvina Jonas, M.Sc | MEDION, PT | Mr. Lexan T. +62 22 603 0612 F. +62 22 601 0859 |
| | 15:00 – 15:45 | Indonesian National Poultry Improvement | USDA/ADHPI/FAO | USDA/ADHPI/FAO | Mr. Bimo Wicaksana |

| | | | | | |
|-----------|---------------|--|--|---|---|
| | | Plan | | | T. +62 21 526 2850 F. +62 21 5296 0618 |
| | 16:00 – 16:45 | Poultry Biosecurity | USDA/ADHPI | USDA/ADHPI | Mr. Bimo Wicaksana T. +62 21 526 2850 F. +62 21 5296 0618 |
| | 17:00 – 17:45 | FAO Technical Advisors Answer Your Poultry Health And Production Questions | Dr. Daniel Chitauru | FAO | Ms. Denni T. +62 815 1902 0561 +62 812 9086 254 |
| THEATER 4 | 10:00 – 10:45 | Amino Acid Levels For Optimal Performance in Layers | Dr. Torben Madsen | EVONIK DEGUSSA PEROXIDE INDONESIA, PT | Mr. Adi Sucipto T. +62 21 520 0393 F. +62 21 520 0392 |
| | 11:00 – 11:45 | Modern Poultry Processing | Mr. Dominique Arnault | BAYLE | Mr. Dominique Arnault T. +603 7725 7414 |
| | 13:30 – 14:15 | Managing Hatching Egg Perfection | Mr. Niels Garaerts | VENCOMATIC B.V | Mr. Dedy M. +62 811188305 |
| | 14:30 – 15:15 | Differentiating Organic Minerals In The Market – What are The Key Important Things To Take Note Of | Mr. Art L. Frio | ALLTECH | Ms. Anggi Mokoginta T. +62 21 8370 8502 M. +62 811 945 074 F. +62 21 8370 8509 |
| | 15:30 – 16:15 | Otigen..Superior Nitrogen Source For Ruminants | Drh. Lina Maryana | ALLTECH | Ms. Anggi Mokoginta T. +62 21 8370 8502 M. +62 811 945 074 F. +62 21 8370 8509 |
| THEATER 5 | 10:00 – 10:45 | Efisiensi Pengujian Serologi, ELISA dengan Microplate Dispenser | Mr. Satriyo | ELO KARSA UTAMA, PT | Mr. Riandy Santoso T. +62 21 739 2565 F. +62 21 726 0177 |
| | 11:00 – 11:45 | Realizing The Genetic Potential of Shrimp in The Farm | Mr. Glen Illing | SYAQUA | Ms. Wiwien Winarsih T. +62 21 3002 9372 |
| | 13:00 – 13:45 | Keuntungan Menanam Jangung | Mr. Dody Wiratmoko | BISI International | Ms. Riztya Harini T. +62 21 691 6677 F. +62 21 692 5012 |
| | 14:00 – 14:45 | Novel Peptide Applications for Poultry | Mr. Robert Nichol | LINKASIA PARTNERS | Ms. Patricia Ng T. +65 6827 4433 |
| | 15:00 – 15:45 | Fly Control-Improves Livestock Performance | Ms. Young-Jee Shin, DVM | BLUE SKY BIOTECH, PT / TRI-ON INTERNATIONAL | Ms. Maria Magdalena T. +62 21 756 5164 F. +6221 756 5165 |
| | 16:00 – 16:45 | Promozen-L Alternate to Boost Immunity in Broiler | Mr. KE. Jang, DVM | BLUE SKY BIOTECH, PT / SAMYANG ANIPHARM | Ms. Maria Magdalena T. +62 21 756 5164 F. +6221 756 5165 |
| | 17:00 – 17:45 | | | | |
| THEATER 6 | 10:00 – 10:45 | New Development in Mycotoxin Risk Management | Dr. Tan Seong Lim | ROMINDO PRIMAVETCOM, PT BIOMIN SINGAPORE PTE LTD | Ms. Geraldine Tan T. +65 6631 8008 +65 6544 4171 F. +65 6275 4743 |
| | 11:00 – 11:45 | The Truth about Acidifier | Ms. Yatie Setiarsih | ROMINDO PRIMAVETCOM, PT BIOMIN SINGAPORE PTE LTD | Ms. Geraldine Tan T. +65 6631 8008 +65 6544 4171 F. +65 6275 4743 |
| | 13:00 – 13:45 | Quality Layer Feed Lead to Increase Egg Production & Decrease Mortality During Heat Stress | Mr. William Chin | SHSI | Ms. Kristi PA T. +62 813 288 25625 |
| THEATER 7 | 10:00 – 10:45 | Broiler Closed House System | Mr. Sirisak Issrangkura & Mr. Slamet Muryo Kristiono | CHAROEN POKPHAND INDONESIA | Ms. Riztya Harini T. +62 21 691 6677 F. +62 21 692 5012 |
| | 13:00 – 13:45 | Financing Poultry Bisnis | Ms. Melania Halim | Bank Agris | Mr. Irwin T. +62 53 111 |
| | 14:00 – 14:45 | Semen Analysis with Sperm Vision | Mr. Marc Birkefeld | MINITUB | Mr. Zulkifli Harahap T. +62 21 775 9879 F. +62 21 777 7421 |
| | 15:00 – 15:45 | The Ultrasound Scanners That Make You A Specialist | Mr. Emmanuel Chateau | MINITUB | Mr. Zulkifli Harahap T. +62 21 775 9879 F. +62 21 777 7421 |
| | 16:00 – 16:45 | A Novel Approach to Combat Mastitis | Dr. Praful Kumar | AYURVET LIMITED | Mr. Rohit Kainth + 91 11 224 55992 -4 + 91 11 224 55991 |
| THEATER 8 | 10:00 – 10:45 | Recent Development in Shrimp Feeds | Dr. Wee Kok Leong | GOLD COIN INDONESIA, PT | Ms. Surmini T. +62 21 884 2445 F. +62 21 884 2085 |
| | 11:00 – 11:45 | Implementing Biosecurity Principal to Prevent AI Disease | Mr. Tony Unandar | PFIZER | Ms. Bitra YK M. +62 815 749 58933 |
| | 13:00 – 13:45 | Feed and Feeding Programme For Layer In Hot Climate | Mr. Desianto Budi Utomo, Ph.D | CHAROEN POKPHAND INDONESIA | Ms. Kristi PA T. +62 813 288 25625 |
| | 14:00 – 14:45 | Layer Closed House System | Ir. Achmadi | CHAROEN POKPHAND INDONESIA | Mr. Irwin I T. +62 21 625 3111 |
| | 15:00 – 15:45 | Strategy Pengendalian HPAI H5N1 | Kamaluddin Zarkasie Drh, PHD (IPB Shigetta) | SHSI | Ms. Kristi PA T. +62 813 288 25625 |
| | 16:30 – 17:15 | Strategy Pengendalian HPAI H5N1 | Kamaluddin Zarkasie Drh, PHD (IPB Shigetta) | SHSI | Ms. Kristi PA T. +62 813 288 25625 |
| | 17:30 – 18:15 | | | | |

| SATURDAY, JULY 10, 2010 | | | | | |
|-------------------------|---------------|--|--------------------------------------|---|--|
| Venue | Time | Topic | Speaker | Company | Contact Person |
| THEATER 1 | 10:00 – 10:45 | Standardized Procedure for Molecular Animal Health Solution | Dra. Nurul Aini, M.Si | LABORINDO SARANA | To Be Advised |
| | 11:00 – 11:45 | Ventilation In Hatchery | Mr. David Buessing | CHICK MASTER | Mr. Dedy M. 0811 188 305 |
| | 13:00 – 13:45 | Solusi Integrasi Manajemen Animal Livestock dengan Menggunakan Microchip | Mr. Ivan Ilanovara | THINK SMART | Ms. Santy T. +62 818 417 496 |
| | 14:00 – 14:45 | Superiority of Solid State Enzymes in Animal Feed: From Agricultural by-Product to Conventional Feedstuffs | Ir. Burhanudin Sundu, PhD | ALLTECH | Ms. Anggi Mokoginta T. +62 21 8370 8502 M. +62 811 945 074 F. +62 21 8370 8509 |
| THEATER 2 | 11:00 – 11:45 | Metode Purifikasi DNA/ RNA Menggunakan Teknik Otomatisasi Magnetic Beads | Mr. Muhammad Hasan | ELO KARSA UTAMA, PT | Mr. Riandy Santoso T. +62 21 739 2565 F. +62 21 726 0177 |
| | 13:00 – 13:45 | Multiple Mycotoxin Management – ALL in ONE Approach (speaking about Pigs) | Dr. Ng Say Chin | AYURVET LIMITED | Mr. Rohit Kainth T. +. 91 11 224 55992 -4 F. +. 91 11 224 55991 |
| | 14:00 – 14:45 | Recent Dairy Technology | Mr. Rudy Hudin | STORK FOOD SYSTEMS INDONESIA | Mr. Rudy Hudin T. +62 21 569 74008 F. +62 21 569 59071 |
| THEATER 3 | 11:00 – 11:45 | HatchTraveller and HatchBrood | Mr. Carel Neervoort | HATCHTECH | Mr. Carel Neervoort T. + 31 318512511 F. + 31 318517487 |
| | 13:00 – 13:45 | Laboratory Biosafety & Biosecurity | Prasad Kuduvalli Indrawati Sendow | BIOSECURITY ENGAGEMENT PROGRAM (BEP) | Ms. Wahyuni Kamah / Mr. Felipe Zuluaga T. +62 21 3435 9270 +62 812 120 7063 F. +62 21 3435 9935 |
| THEATER 4 | 11:00 – 11:45 | Mastitis Vaccine | Ovejero and Paeco Agung | PAECO AGUNG, PT | Mr. Idham Karim, SE/ Drh. Puji Hartini T. +62 21 797 5651 F. +62 21 798 2678 |
| | 13:00 – 13:45 | Feeding & Feeding Management Systems | Mr. Budi Tangendjaja | AGRI SERVIS SAKTI (DELAVAL) | Bapak Santo T. +62 341 553 515 F. +62 341 557 430 |
| | 14:00 – 14:45 | Dairy Industry Investment | Mr. Brendan Collins | AGRI SERVIS SAKTI (DELAVAL) | Bapak Santo T. +62 341 553 515 F. +62 341 557 430 |
| THEATER 5 | 11:00 – 11:45 | Solusi Integrasi Manajemen Animal Livestock dengan Menggunakan Microchip | Mr. Ivan Ilanovara | THINK SMART | Ms. Santy T. +62 818 417 496 |
| THEATER 6 | 10:00 – 10:45 | Microchip Eartag | Mr. John Dumbrell | LEADER PRODUCT AUSTRALIA / LUNAR CHEMPLAST, PT | Ms. Meutia/ Ms. Siti T. +62 21 720 7136/ 723 3318 F. +62 21 720 6603 |
| | 11:00 – 11:45 | Benefits of Using a Milking Machine | Mr. Phillip Schultz | DAVIESWAY AUSTRALIA / LUNAR CHEMPLAST, PT | Ms. Meutia/ Ms. Siti T. +62 21 720 7136/ 723 3318 F. +62 21 720 6603 |
| | 13:00 – 13:45 | Pemanfaatan Limbah Kotoran Ternak untuk BIOGAS | Dr. Ir. Teguh Widodo, M.Sc | BALAI BESAR PENGEMBANGAN (BPP) MEKANISASI PERTANIAN | Ms. Meutia/ Ms. Siti T. +62 21 720 7136/ 723 3318 F. +62 21 720 6603 |
| THEATER 7 | 10:00 – 10:45 | Posisi Strategis Industri Pembibitan Layer dalam Pembangunan Perunggasan | Mr. Willie Blokvoort | ISA INDONESIA, PT POULTRY INDONESIA | Ms. Yetti Liza T. +62 21 7074 9491 M. +62 815 1124 7083 |
| | 11:00 – 11:45 | Posisi Strategis Industri Pembibitan Layer dalam Pembangunan Perunggasan | Mr. Willie Blokvoort | ISA INDONESIA, PT POULTRY INDONESIA | Ms. Yetti Liza T. +62 21 7074 9491 M. +62 815 1124 7083 |
| | 13:00 – 13:45 | Meningkatkan Daya Saing Bangsa Melalui Penyediaan Protein Hewani yang Berkualitas & Terjangkau | Prof. Dr. drh. Agik Suprayogi | I P B | Mr. Hendra M. 62 816 637 498 |
| | 14:00 – 14:45 | Meningkatkan Daya Saing Bangsa Melalui Penyediaan Protein Hewani yang Berkualitas & Terjangkau | Prof. Dr. drh. Agik Suprayogi | I P B | Mr. Hendra M. 62 816 637 498 |
| | 15:00 – 15:45 | Meningkatkan Daya Saing Bangsa Melalui Penyediaan Protein Hewani yang Berkualitas & Terjangkau | Prof. Dr. drh. Agik Suprayogi | I P B | Mr. Hendra M. 62 816 637 498 |
| | 16:00 – 16:45 | Meningkatkan Daya Saing Bangsa Melalui Penyediaan Protein Hewani yang Berkualitas & Terjangkau | Prof. Dr. drh. Agik Suprayogi | I P B | Mr. Hendra M. 62 816 637 498 |



INDO 
LIVESTOCK
2010 EXPO & FORUM
INDONESIA'S NO.1 LIVESTOCK AND FEED INDUSTRY SHOW

INCORPORATING WITH

INDOFEED
2010 EXPO & FORUM
INDONESIA'S NO.1 FEED INDUSTRY EVENT

INDO DAIRY
2010 EXPO & FORUM
INDONESIA'S NO.1 DAIRY INDUSTRY EVENT

INDO 
FISHERIES
2010 EXPO & FORUM
INDONESIA'S NO.1 FISHERIES INDUSTRY EVENT

Exhibitors Quote



| | | |
|-----|--|--|
| 1. | Alltech Biotechnology Indonesia, PT | Customers generated and visitors more crowded than 2 years ago Its nice turn out |
| 2. | AMB Exhibition | The flow of the exhibition is nice Quantity of visitors – like farmer. |
| 3. | Animal Supplement Pharmaceutical | Many potentials exhibitors and visitors |
| 4. | Australian Trade Commission | The attendees are from a specific industry |
| 5. | Behn Meyer Kimia | The exhibitors specifications area, well organized |
| 6. | BioMin Singapore Pte Ltd | Location of exhibition center is convenient Participation of major feed millers in the exhibition To allocate a bigger booth area for the booths in Singapore pavilion |
| 7. | Blue Sky Biotech, PT | Well organized |
| 8. | Charoen Pokphan Indonesia, PT | Meet new business contact |
| 9. | CJ Feed Indonesia | We like the visitors are very appreciate this event |
| 10. | Directorate of Livestock Services | In the exhibition make new business contacts between participants from each company Sharing experience, knowledge and transfer technology |
| 11. | Dosatron | Farmers visits Cocktail party targeted with VIP and opinion Leaders |
| 12. | Dwipa Megah Lestari, PT | Connecting with our business Promote |
| 13. | Frontec Agritama Engineering | We can promote our products We know the improvement of the industries outside |
| 14. | Green A Services | Good |
| 15. | Haes Brothers, PT | Quite good and have many participant and visitors. |
| 16. | Han Dong Co., Ltd | Staff were kind and supportive |
| 17. | Indivasia Sdn Bhd | Good exposure, advertisement |
| 18. | Indonesia News Center, PT (inilah.com) | Good facilitating staff Smooth operations Very good environment / venue Lively |
| 19. | Kaliber Mitra Sakti, PT | We could pronounce a local products like our products |
| 20. | Kawan Lama Sejahtera, PT | Get many relation in business |
| 21. | Kemin | Clean area, New atmosphere Coverage all of the area by customer Promotion to all of goal news paper & aboard |

| | | |
|-----|-----------------------------------|---|
| 22. | Kepro BV. Holland | Exceeded and better than last 2008 exhibition |
| 23. | Lohmann Animal Health, PT | Well organized |
| 24. | Lu & Kevin (Huanan) Tech Co., Ltd | Service is very good |
| 25. | National Renderes Association | Many people Bigger than 2 years ago |
| 26. | Novindo Agritech Utama, PT | Meet the customers See many unique design of the booth Create new business |
| 27. | Otasindo Prima Satwa | To meet new customers To promote our the newest product |
| 28. | Ottevenger | Set up + organization is ok |
| 29. | Paeco Agung, PT | Good for business meeting (direct meet with customer and supplier) Good technical meeting |
| 30. | Pesona Scientific | Would like to expanded my business for the future |
| 31. | PT. Medion | Bigger venue, more visitors |
| 32. | PTN Bayle | Good mix of people |
| 33. | PUSLITBANGNAK | The exhibitors come from any place in the word with many product and technology |
| 34. | Romindo Primavetcom | Meet easily business contacts |
| 35. | Sumber Aneka Karya Abadi | Professional |
| 36. | Sun Rise E&T Corp | Very clear |
| 37. | Tabloid Sinar Tani | In exhibition we get a lot of information specially about livestock aspect |
| 38. | Todda Perkasa, PT | It's very important to improve my business, we've many buyers and have an opportunity to discuss with them what they need |
| 39. | Val – Co | Good helper organizers Booth are reasonable price |
| 40. | Van Aarsen | Many visitor Location is good |
| 41. | Vemedim Corporation | Friendly employee |
| 42. | Vencomatic | Good |
| 43. | Wuhan Sunhy Biology Co., Ltd | Well organized Booth looks clean & nice |



INDO
LIVESTOCK
2010 EXPO & FORUM
INDONESIA'S NO.1 LIVESTOCK AND FEED INDUSTRY SHOW



INCORPORATING WITH

INDOFEED
2010 EXPO & FORUM
INDONESIA'S NO.1 FEED INDUSTRY EVENT

INDO DAIRY
2010 EXPO & FORUM
INDONESIA'S NO.1 DAIRY INDUSTRY EVENT

INDO
FISHERIES
2010 EXPO & FORUM
INDONESIA'S NO.1 FISHERIES INDUSTRY EVENT



Publications



TV COVERAGES (NEWS BLITZ)

- TVRI
- RCTI
- METRO TV

DIRECT MAILING:

Post Card : February 2010
 Show Preview : June 2010

POST CARD

Anda Diundang Untuk Datang Ke



www.indolivestock.com

PAMERAN INDUSTRI PETERNAKAN, PAKAN TERNAK DAN PERIKANAN TERBESAR DI INDONESIA

8 - 10 Juli 2010, Jakarta Convention Center, Indonesia

Untuk kali kelima, Jakarta menjadi tuan rumah penyelenggaraan pameran dan forum industri peternakan, pakan ternak dan perikanan terbesar di Indonesia - INDO LIVESTOCK 2010 EXPO & FORUM bersamaan dengan INDO FISHERIES 2010, INDO FEED 2010 dan INDO DAIRY 2010 EXPO & FORUM. Lebih dari 9.000 delegasi dan pengunjung profesional yang terdiri dari dokter hewan, produsen pakan ternak, peternak, peternak ikan, penyalur, distributor akan datang dan berkumpul di Jakarta Convention Center, Jakarta, pada tanggal 8-10 Juli 2010. Menampilkan lebih dari 350 peserta dari 35 Negara, termasuk para delegasi yang mewakili bidang importir makanan dan integrator dari Asia termasuk Singapura, Thailand, Malaysia, China, India, Brunei, Vietnam dan Kamboja.

Perusahaan yang menyatakan akan ikut dalam pameran ini antara lain adalah: Japfa Comfeed, Charoen Pokphand, Behn Meyer, Big Dutchman, Zhengchang, Muyang, Medion, Romindo, Adisseo, Sierad Produce, Gemilang Citra Indo, Alltech, Big Herdsman, Blue Sky, Caprifamindo, Ceva, Laboratorios Hipra, Schmidt-Seeger, GSI Asia, Trouw Nutrition, Zucami, CJ Feed Indonesia, Canada Pav, Australia Pav, China Pav, Singapore Pav, Eropa Pav, ASOHI Pav, Taiwan Pav, Euriatec, Salmet, E-Cat, Vencomatic, Lito Prima Mandiri, Chick Master, Serupa, Dosatron International, FAO, Frontec

Agritama Eng., Hubbard S.A.S, Isa Indonesia, Lunar Chemplast, Mintube, Pas Reform, SAKA, Biomin, DSM, Finetek, Kemir Industries, Novus, Todda Perkasa, Tri Dinamika Nusantara, USDA, BEP, Elo Karsa Utama, LAH, Evonik Degussa Peroxide, Buhler, Shandong Steel Silo, Gambir Trading Company, Prinzen, Biochem, Stork, MPS, Techno, MOBA, Nabel Asia, Otlasindo, Sinta Prima Feedmill, Sanbio Lab, Green A Service, Indian Herbs Overseas, VTR-Co, Ishii Livestock Equipment-Shanghai, Alke Bv, QYH, Ottevanger, Impex Barneveld Bv, Andritz, Guangzhou Leader Biotechnology, VAL-CO, Chemtrade, Agri Servis Sakti DeLaval, Novindo, Nutrimax, Goldlong, Paeco Agung, Astino, Mensana Aneka Satwa dan lainnya.

Pameran INDO LIVESTOCK 2010 akan menghadirkan teknologi dan berbagai isu baru serta perkembangan industri terbaru dan memberikan kesempatan untuk mengembangkan jaringan serta membangun kerjasama bisnis dan kemitraan.

Daftarkan diri anda di www.indolivestock.com.



Indonesia's No.1 Livestock and Feed Industry Show

Jam Buka Pameran
 10:00 - 18:00 WIB (8-9 Juli)
 10:00 - 17:30 WIB (10 Juli)

Hosted by



Supported by



Official Magazine



Media Partners



Organised by



www.indolivestock.com





Protein Hewani untuk Sehat dan Cerdas

IF UNDELIVERED, PLEASE RETURN TO:

PT. NAPINDO MEDIA ASHATAMA
 Jl. Kelapa Sawit XIV Blok M1 No. 10
 Billy & Moon, Pondok Kelapa
 Jakarta 13450, INDONESIA
 Tel: 62-21 8650962, 8644756/85
 Fax: 62-21 8650963
 Email: info@napindo.com

Prangko Berlangganan
 PRKB NO:14/PRKB/JAT.DIVRE IV/2010
 No. Ijin Berlaku S/D 31 Desember 2010



Incorporating With



NEWS PAPER

KOMPAS

Pikiran Rakyat

DARI RAKYAT OLEH RAKYAT UNTUK RAKYAT

SUARA MERDEKA

Jawa Pos

Selalu Ada yang Baru

MAGAZINES

Majalah Ekonomi, Industri & Teknik Perunggasan

POULTRY
INDONESIA

TABLOID
Sinartani
MUDRANGUN KEMANDIRIAN AGRIBISNIS

GROW&FEED
milling technology

TROBOS

 **eFeedLink**
www.efeedlink.com

inilah.com
INOVASI PORTAL BERITA

Infovet

THE ASSOCIATION OF AGRICULTURE
AGRINA

 **International Poultry Production**

 **Asian Poultry**
MAGAZINE

AQUA CULTURE
Asia Pacific



INDO 
LIVESTOCK
2010 EXPO & FORUM
INDONESIA'S NO.1 LIVESTOCK AND FEED INDUSTRY SHOW

INCORPORATING WITH

INDOFEED
2010 EXPO & FORUM
INDONESIA'S NO.1 FEED INDUSTRY EVENT

INDO DAIRY
2010 EXPO & FORUM
INDONESIA'S NO.1 DAIRY INDUSTRY EVENT

INDO 
FISHERIES
2010 EXPO & FORUM
INDONESIA'S NO.1 FISHERIES INDUSTRY EVENT

Advertising



237,58

Milah.Com
KONVASI PORTAL BERITA

BUKAN SOAL MENANG ATAU KALA

Ekonomi | Politik | Gaya Hidup | Olahraga | Ciondoff | Teknologi | Editorial | Fasilitas | Fasilitas | Fasilitas | Fasilitas

Wawancara | Keunggulan | Energi | Makro | Pasar Modal | Profesi Usaha | Layanan | Info Pasar

Binggu, 4 Juli 2010 | Jakarta - Berawan 24.33 °C | Kursi BI : 1 US Dollar = Rp.1641 | Mubako | Newsletter | RSS

EKONOMI
04/07/2010 - 06:29
Ditulis 4 Negara

Pameran & Forum INDO LIVESTOCK 2010 Ke-5
Wanda Ayu



MILAH.COM Jakarta - Komunitas Pengembang Usaha Peternakan Indonesia bekerja sama dengan PT Nagindo Media Ashtama menyelenggarakan Pameran dan forum INDO LIVESTOCK 2010 Ke-5 di Hall A & B, Jakarta Convention Center (JCC) pada 8 - 10 Juli 2010.

Acara ini akan dihadiri oleh peserta baik di tingkat lokal maupun internasional yang terdiri dari 350 peserta pameran dan 35 negara yang berbeda termasuk 4 negara penghasil pakan ternak terbesar, yaitu Cina, Singapura, Indonesia dan Eropa. Peserta dari acara ini akan terdiri dari para pengusaha, peneliti, konsumen, produsen, dan agen-agen pemerintah yang bergerak di sektor pakan ternak. Dengan demikian acara ini akan menjadi suatu acara bertaraf dunia terbesar di Indonesia bahkan di Asia Tenggara.

Para peserta akan disuguhkan dengan forum-forum diskusi, presentasi dari 90 produk pakan peternakan, dan sebuah acara penghargaan "Indo Livestock Award" untuk perusahaan, institusi atau individu-individu yang dinilai sukses berkontribusi dalam mempromosikan pembangunan industri pakan ternak di Indonesia.

Ada lima kategori dalam acara penghargaan "Indo Livestock Award" ini, yaitu kategori: Rekayasa Input, Budidaya, Inovasi Produk, Kelembagaan, Pengembangan SDM dan Perorangan Khusus.

Sejarah ini acara ini telah diadakan empat kali dan ada kecenderungan pengunjung dari acara ini terus bertambah di setiap acara. Karena kecenderungan inilah maka acara yang selama ini diprediksikan akan dikunjungi oleh 12.000 pengunjung dari domestik maupun luar.

Sebagai luan rumah dari acara ini, Direktur Umum dari Patayan Pakan Ternak Kementerian Pertanian memberikan dukungan penuh kepada acara ini dan berharap bahwa acara ini juga akan membawa perubahan suasana bagi kondisi perekonomian dan peretonomian Indonesia sekaligus membuka kemungkinan kesempatan kerja yang lebih luas di tanah air.

Kementerian dan organisasi-organisasi profesional lainnya juga ikut mendukung penuh penyelenggaraan acara ini, antara lain: Kementerian Industri, Kementerian Perdagangan, Asosiasi Unggka Indonesia (GPPU), Asosiasi Dokter Hewan Indonesia (PDHI), Asosiasi Hewan Indonesia (GPIPI), Pusat Informasi Pasar Pakan Ternak Indonesia (PINDAR), Organisasi Virusana Peternakan Ayam Nasional Indonesia (MFI), Asosiasi Pameran Perusahaan Indonesia (ASPERAPI), serta para pemegang kesuksesan dan institusi-institusi sosial. [10]

Dapatkan berita populer pilihan Anda gratis setiap pagi di **SiM** atau akses mobile langsung <http://m.milah.com> via ponsel dan BlackBerry.

[Kirim Komentar]

Berita Terkait | Berita Lainnya

Berita terkait tidak ada, silahkan klik tab 'Berita Lainnya' di atas

Ekonomi | Politik | Gaya Hidup | Olahraga | Ciondoff | Editorial | Indonesia
Inilah Sepak Bola | Inilah TV | Inilah Artis | Inilah Foto | Inilah Indie | Inilah Karikun | Dokter Spesialis | Klinik Pak Yadi



INDO AQUACULTURE 2010 EXPO & FORUM | **INDOFEED 2010 EXPO & FORUM** | **INDO DAIRY 2010 EXPO & FORUM** | **INDO LIVESTOCK 2010 EXPO & FORUM**

8 - 10 July 2010 | Jakarta Convention Center, Jakarta

THE 5TH INDONESIA'S NO.1 LIVESTOCK AND FEED INDUSTRY EVENT

85% BOOKED

Pameran ke-5 Peternakan dan Pakan Ternak Terbesar di Indonesia

Dunia peternakan dan pakan ternak akan bertumbuh untuk kali ke lima pada pameran Indo Livestock 2010 yang akan diselenggarakan pada tanggal 8-10 Juli 2010 di Jakarta Convention Center, Jakarta.

Pemerintah, integrator industri, peternak, dokter hewan, pengolah pakan ternak, pengolah makanan, peneliti dan pengusaha dari seluruh wilayah di Indonesia telah menetapkan bahwa Pameran Indo Livestock adalah tempat utama untuk menemukan teknologi baru, membangun rekan bisnis, sumber untuk berinvestasi dan memperoleh informasi perkembangan terbaru saat ini.

Lebih dari 350 peserta dari 35 negara akan berpartisipasi dalam Pameran Indo Livestock. Bergabunglah bersama kami untuk bertemu dengan para pembicara berputaran dari integrator, industri pakan ternak, peternak, dokter hewan, pengolah makanan dan penyaku. Pameran ini benar-benar terbanar dan terlengkap di Indonesia.

Ini adalah saat yang tepat untuk membuat Indo Livestock tempat untuk memajukan produk-produk perusahaan anda. Tempuh tributan hubungan kami sekarang juga.

Didit Siswadiatmoko
PT Nagindo Media Ashtama
J. Kertapa Sempit XV Blok B61 No. 310 Billy & Moon
Pondok Kelapa, Jakarta - 13400, Indonesia
Telp: +621 8644756/85, 8650962, Fax: +621 8650563
Email: info@indolivestock.com

www.indolivestock.com

Hosted by: 

KOMPAS

**3 HARI
LAGI DIBUKA**

**INDO LIVESTOCK
2010 EXPO & FORUM**
INDONESIA'S NO.1 LIVESTOCK AND FEED INDUSTRY SHOW

**INDO FISHERIES
2010 EXPO & FORUM**

INCORPORATING WITH

**INDO DAIRY
2010 EXPO & FORUM**

**INDO FEED
2010 EXPO & FORUM**

**KUNJUNGILAH PAMERAN INTERNASIONAL
INDUSTRI PETERNAKAN, PAKAN TERNAK,
DAN PERIKANAN**

8 - 10 Juli 2010
Hall A & B, Jakarta Convention Center

- Diikuti oleh lebih dari 350 peserta dari 39 Negara termasuk 4 Paviliun Negara (Cina, Singapura, Eropa dan Indonesia).
- Akan dihadiri oleh lebih dari 9.000 delegasi dan pengunjung dari kalangan industri profesional, dokter hewan, peternak, pembuat pakan ternak, penyalur dan industri pengolahan makanan dari Indonesia dan Mancanegara.
- Penganugerahan INDO LIVESTOCK 2010 Awards kepada perusahaan, lembaga maupun individu yang berprestasi dalam bidang industri peternakan.
- Menampilkan lebih dari 90 presentasi produk dari peserta pameran (gratis).

JAM BUKA PAMERAN

10:00 - 18:00 WIB (8 - 9 Juli 2010)
10:00 - 17:30 WIB (10 Juli 2010)

SEMINAR IPB - 8 JULI 2010

Menjalin Kolaborasi Sinergis Stakeholder dalam Pengembangan Usaha Peternakan Skala Menengah (Model, Teknologi, Pendidikan dan Pendanaan)

Kontak:
Prof. Dr.Ir. Komang G Wiryawan
Tel: 08129586527

Dr. Despal, S.Pt., M.Sc.
Tel: 061381992708

ISPI - 9 JULI 2010

Seminar Nasional dan Pra Kongres Ke X Ikatan Sarjana Peternakan Indonesia

Peserta seminar dari umum dibatasi hanya untuk 75 orang.

Kontak:
Bapak Robi Agustiar
Tel: 0852 2111 3864
Fax: 022 7213286
E-mail: robiagustiar@gmail.com

Hosted by: Supported by:


Organised by: **PT. Napindo Media Ashatama** Sponsor:

Tel. 021 8644756/85, 8650962
Fax. 021 8650963
Email: info@indolivestock.com

www.indolivestock.com www.indofisheries.org

Siapkan kartu nama anda. Pengunjung dibawah umur 18 tahun, bercelana pendek, kaos oblong, memakai sandal jepit/ kulit tidak diperkenankan masuk ke area pameran

8 - 10 July 2010
Jakarta Convention Center
Indonesia

INDO 
LIVESTOCK
2010 EXPO & FORUM
 INDONESIA'S NO.1 LIVESTOCK AND FEED INDUSTRY SHOW



THE 5TH INDONESIA'S NO.1 LIVESTOCK AND FEED INDUSTRY EVENT



REPLY COUPON www.indolivestock.com

Please send me more information on exhibiting at INDO LIVESTOCK 2010 EXPO & FORUM

Name: _____
 Jobtitle: _____

Please send me more information on visiting at INDO LIVESTOCK 2010 EXPO & FORUM

Company: _____
 Address: _____

For further information, please call/ fax to:
 PT. Napindo Media Ashatama,
 Jl. Kelapa Sawit XIV Blok M1 No. 10 Billy & Moon,
 Pondok Kelapa, Jakarta -13450, Indonesia
 Telp. +6221 8644756/ 85, 8650962, Fax. +62218650963
 Email: info@indolivestock.com

Tel: _____ Fax: _____
 Mobile: _____
 Email: _____

Poultry magz 2010

Hosted by:  

Supported by:                          

Official Magazine: 

Media Partners:         

Organised by: 



Edisi 05 / Mei 2010

INDO LIVESTOCK 2010 EXPO & FORUM

INDONESIA'S NO.1 LIVESTOCK AND FEED INDUSTRY SHOW



INDONESIA'S NO.1 FEED INDUSTRY EVENT

THE 5TH INDONESIA'S NO.1 LIVESTOCK AND FEED INDUSTRY EVENT



www.indolivestock.com

Hosted by: 

Official Magazine: 

Organized by: 

Supported by: 

Media Partners: 

For further information, please call/ fax to:
PT Napindo Media Ashatama,
J. Kelapa Sawit XIV Blok M1 No. 10 Billy & Moon, Pondok Kelapa, Jakarta - 13455, Indonesia
Telp. +621 8644756/ 85, 8650962, Fax. +621 8650963
Email: info@indolivestock.com

Organized by: 

For further information, please call/ fax to:
PT Napindo Media Ashatama,
J. Kelapa Sawit XIV Blok M1 No. 10 Billy & Moon, Pondok Kelapa, Jakarta - 13455, Indonesia
Telp. +621 8644756/ 85, 8650962, Fax. +621 8650963
Email: info@indolivestock.com





Edisi 12 / Desember 2009

INDO LIVESTOCK 2010 EXPO & FORUM

INDONESIA'S NO.1 LIVESTOCK AND FEED INDUSTRY SHOW

Gizi Nasional

Indo Livestock 2008 — merupakan awal gerakan Kampanye SDT (susu, daging & telur) dan hingga kini, program ini juga telah dikembangkan oleh banyak pihak. Pada Indo Livestock 2010 Expo & Forum, PT Napindo Media Ashatama (penyelenggara Indo Livestock) akan kembali menyebarkan kampanye susu daging dan telur pada Gerakan Gizi Nasional dengan tujuan mempromosikan kembali peningkatan konsumsi susu, daging, dan telur kepada masyarakat umum.

Masih terjadinya kasus Gizi Buruk di tengah pesatnya Pembangunan Nasional, bukan melulu karena faktor ekonomi. Kurangnya pemahaman akan makanan sehat, dan pola konsumtif masyarakat yang salah, juga menjadi penyebabnya.

Rata-rata konsumsi protein asal hewan pada masyarakat di Indonesia masih berkisar 5 gram/hari, masih kekurangan 2 gram dari yang disarankan oleh WHO (World Health Organization) yaitu 7 gram perhari.

Demikian pula, rata-rata konsumsi Protein asal Hewan masyarakat Indonesia lebih rendah dari Malaysia. Misalkan dalam konsumsi telur; masyarakat Indonesia mengkonsumsi 67 butir telur perkapita pertahun, sedangkan Malaysia mencapai 317 butir perkapita pertahun, artinya 3 kali lebih banyak dari yang dikonsumsi oleh masyarakat Indonesia. Rata-rata orang Indonesia mengkonsumsi 4,5 kg ayam / kapita setiap tahunnya sedangkan rata-rata orang Malaysia mengkonsumsi 38,5 kg ayam / kapita setiap tahunnya. Rata-rata orang Indonesia mengkonsumsi 7 kg susu / kapita setiap tahunnya dan rata-rata orang Malaysia mengkonsumsi 20 kg susu / kapita setiap tahunnya (sumber FAO Januari 2005).

Permbantaian genear tentang flu burung, sapi gila, bakteri pada susu diperkirakan banyak mempengaruhi penurunan konsumsi protein asal hewan pada masyarakat. Sementara di sisi lain gencarnya promosi berbagai produk yang membentuk gaya hidup konsumtif masyarakat sehingga masyarakat lebih banyak membeli

barang yang tidak terlalu penting misalkan rokok dan pulsa telepon dari pada meningkatkan pembelian susu, daging dan telur.

Selain itu, karena kurangnya pemahaman akan manfaat Protein Hewan juga memicu masyarakat dalam mengkonsumsi protein asal hewan.

Padahal, protein asal Hewan (DAGING, TELUR, SUSU, IKAN) itu mengandung Zat Besi (Fe = Ferum) yang bersinergi dengan Animal Protein Factor dan TIDAK DAPAT DIGANTIKAN OLEH PROTEIN LAIN.

Manfaat protein asal hewan itu untuk mendukung "KESEHATAN DAN KEBUGARAN" sehingga tubuh tetap bugar & mampu beraktfitas lama. Sedangkan pengaruh lainnya, bahwa protein asal hewan itu "MENCEERDASKAN BANGSA" sehingga Olak mampu berfikir analitis dan konsepsional.

Kampanye SDT tahun 2010 diharapkan akan tetap didukung oleh asosiasi dan organisasi dibidang peternakan, media massa dan pemerintah yang memiliki tekad untuk turut membentuk manusia Indonesia yang cerdas melalui peningkatan asupan protein asal hewan.

Sebenarnya program ini telah diangkat pada pembukaan Indo Livestock 2006 lalu oleh Bapak Mathur Riyadi, yang saat itu menjabat sebagai Dirjen Peternakan Departemen Pertanian.

Atas masukan dari beberapa pihak, stakeholder, dan asosiasi terkait dalam industri peternakan yang juga penggagas dari kampanye gizi nasional melalui protein hewani, maka gerakan itu ditindaklanjuti dan diperluas cakupannya, maka selanjutnya gerakan ini menggunakan nama Kampanye SDT (susu, daging, dan telur).

Diharapkan kampanye SDT ini mampu meningkatkan kesadaran masyarakat untuk mengkonsumsi protein asal hewan setiap hari. Perubahan perilaku ini diharapkan dalam jangka panjang dapat menurunkan angka gizi buruk dan meningkatkan kecerdasan bangsa. Selain itu, keberhasilan program ini secara langsung juga berdampak pada perkembangan industri peternakan dan pakan ternak di Indonesia.

Tentunya, program SDT ini perlu dipromosikan kepada masyarakat secara luas dan berkelanjutan untuk meningkatkan kesadaran dan perilaku untuk mengkonsumsi protein asal hewan (Susu - Daging -Telur/SDT) dengan tujuan tercapainya masyarakat Indonesia yang cerdas, sehat dan kuat.

Menyongsong INDO LIVESTOCK 2010 EXPO & FORUM

Indonesia kembali menyelenggarakan pameran INDO LIVESTOCK 2010 Expo & Forum yang akan diselenggarakan pada tanggal 8 - 10 Juli 2010 di Jakarta Convention Center, Jakarta. Dalam pameran kali ini diselenggarakan juga pameran INDO AQUACULTURE 2010 Expo & Forum.



PT Napindo Media Ashatama sebagai penyelenggara bertekad untuk meningkatkan kualitas pelayanan lebih baik lagi. Herman Winadipoera, Dirut Napindo, mengatakan bahwa "Penyelenggaraan Indo Livestock 2010 mengulang kesuksesan penyelenggaraan pameran sebelumnya, hal ini dapat dilihat dari banyaknya peserta pameran yang ikut dan jumlah pengunjung yang lebih baik dari penyelenggaraan sebelumnya."

Beberapa nama besar yang menyatakan akan turut serta dalam pameran Indo Livestock 2010 antara lain: Charoen Pokphand Group, Japfa Comfeed, Big Duttonman, Jianguo Muyang, Minutube, Munter, Nirvana, Hubbard, ISA Indonesia, Alltech, Core - Time Brock, Biochem, Novartis, Romindo, Gemilang Group, Schering-Plough, Stork dan lainnya.

Penyelenggara juga akan mempromosikan kembali gerakan hidup sehat melalui peningkatan konsumsi protein hewani yang dikenal dengan SDT (Susu, Daging dan Telur), diharapkan dalam pelaksanaannya akan di dukung oleh seluruh pihak, baik pemerintah, swasta, asosiasi dan masyarakat.

Diperkirakan lebih dari 300 peserta dari berbagai negara akan turut serta dalam pameran Indo Livestock 2010, dan diperkirakan pameran ini akan dikunjungi oleh lebih dari 9.000 peternak, penyalur, distributor, agen, dokter hewan dan lainnya dari seluruh wilayah Indonesia, termasuk juga delegasi dari berbagai negara di Asia dan Asia Tenggara.

Peningkatan waktu Anda dari sekarang, informasi tentang pameran dapat dilihat melalui website www.indolivestock.com

"The exhibition was very interesting, keep it up. Thanks"
Nana Supriatna, AARO, MOA ROI

"We met with the severe new customers"
Albert, Cakar Mas, PT

"It is good for meeting place with the customers and government then follow up with business visit"
Ili Kusmidri, Intervet / Schering Plough.

"Well known, well attended/ visited"
Willie Blokvoort, Iaa Indonesia, PT

"Good local crowd. People interests. Good setup. Well organized"
G.M. Hiremath, Shanghai Val Livestock Equipment Co., Ltd

"Get the new customers, promotes our company and products"
Tekad Mandiri Citra, PT

"Distributor of our product and Generates sales enquiries"
Yang In Geun / Kang B.C. / YS. Kwak
Seayang Tech., Co., Ltd

"Indolivestock is the biggest exhibition for livestock industry. So many customer come to the booth, we like it..."
Forlin Tinora, Novartis Indonesia, PT



INDOFEED
2010 EXPO & FORUM
INDONESIA'S NO.1 FEED INDUSTRY EVENT

INDO DAIRY
2010 EXPO & FORUM
INDONESIA'S NO.1 DAIRY INDUSTRY EVENT

INDO 
FISHERIES
2010 EXPO & FORUM
INDONESIA'S NO.1 FISHERIES INDUSTRY EVENT

Documentation



OPENING CEREMONY



EXHIBITION TOUR



IN THE HALL



FORUMS & TECHNICAL PRODUCT PRESENTATIONS



AWARDS

BEST STAND DESIGN

1. Sierad Produce
2. Japfa Comfeed Indonesia, PT
3. Gemilang Citra Indo, PT

BEST STAND PERFORMANCE

1. Charoen Pokphand Indonesia, PT
2. Medion, PT
3. Romindo Prima Vetcom, PT



